

Historic, Archive Document

Do not assume content reflects current scientific knowledge, policies, or practices.

62.73

17.0000

AUG 10 1925



HOSEA WATERER'S BULBS

AUTUMN
1925

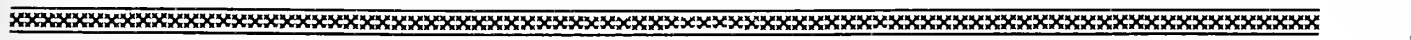


HOSEA WATERER

Seedsman and Bulb Importer

714 CHESTNUT STREET

PHILADELPHIA





We Have Moved Our Store



PLEASE NOTE CHANGE IN ADDRESS

TO CARE for the ever-increasing volume of our business and better to serve the needs of our many customers, we have found it advisable to enlarge our facilities. We have purchased and now occupy the entire building at 714 Chestnut Street, Philadelphia, having removed our business to that location from 626 Chestnut Street where we have conducted our store for many years.

The new store is less than a block from our old one, and is in the heart of the seed-trade section of Philadelphia. The actual building has been used as a seed store for more than 80 years. The entire floor-space of the building has been devoted to our store and the needs of our seed business, thus greatly increasing our facilities for service to our customers.

Needless to say, the same high standards which have characterized the dealings of our firm in the past and in former locations will be carried forward in the new store and in the future. We are glad to be able to serve more people, and to serve them better than ever before.

We cordially invite our customers and friends to come and visit us in the new location.

THE NEW STORE IS AT 714 CHESTNUT STREET

In buying anything you are first interested in quality and then in price. We import a large number of Dutch Bulbs each year and through long experience have learned where best to buy the different sorts. In placing your requirements in our care, you can accordingly be assured of the quality of our Bulbs at reasonable prices. May we anticipate the privilege of supplying you with the Bulbs you will need this fall?

Suggestions and Information for Ordering

To enable us to execute orders more promptly and to the complete satisfaction of our customers, we offer the following suggestions and information:

Order Early.—We endeavor to ship all orders immediately on receipt, but during the rush season it is almost impossible, hence the importance of ordering early.

Name and Address.—Please write on each order your Name, Post Office, Shipping Point or nearest Express Office, your County and State. Use the order sheet enclosed in catalogue if possible.

Prices.—It is our endeavor to maintain the prices quoted in this catalogue throughout the season, but in the event of unforeseen circumstances arising, we reserve the right to change the price of any article (in this catalogue) without notice.

Forwarding.—We prepay postage to any post office in the United States, on vegetable and flower seeds quoted by the

packet, ounce, and quarter pound. All other goods are sent by express or freight at purchaser's expense. We make no charge for delivery to freight depots or express offices in Philadelphia.

Non-Warranty.—Hosea Waterer gives no warranty, express or implied, and will not be in any way responsible for the results of planting or forcing of any bulbs and roots he sends out. No complaints are entertained unless made on receipt of goods, and we cannot take any responsibility as to their flowering, which greatly depends upon their treatment. Every precaution is taken to send nothing but well-matured bulbs, such as will under ordinary circumstances produce the very finest flowers and give the utmost satisfaction.

Parcel Post Rates

Weight Limit.—The weight limit within the First, Second, and Third Zones is now 70 pounds, and within all other Zones 50 pounds. Shipments of 20 pounds or over are cheaper if sent by express beyond the Second Zone.

DOMESTIC PARCEL POST RATES

Within the United States and Possessions

	First pound or fraction	Each additional pound or fraction
First Zone within 50 miles of Philadelphia	7 cts.	1 ct.
Second Zone within 50-150 miles of Philadelphia	7 cts.	1 ct.
Third Zone within 150-300 miles of Philadelphia	8 cts.	2 cts.
Fourth Zone within 300-600 miles of Philadelphia	9 cts.	4 cts.
Fifth Zone within 600-1000 miles of Philadelphia	10 cts.	6 cts.
Sixth Zone within 1000-1400 miles of Philadelphia	11 cts.	8 cts.
Seventh Zone within 1400-1800 miles of Philadelphia	13 cts.	10 cts.
Eighth Zone all over 1800 miles of Philadelphia	14 cts.	12 cts.

All goods sent by parcel post are at purchaser's risk, unless insured. Insurance is 5 cents for \$5 or less, 8 cents for \$5 to \$25, 10 cents for \$25 to \$50. This insures delivery only, but not damage to package.

Planting Table

The table below shows the number of bulbs required to fill a circular bed of the dimensions given.

Diameter of Bed	3 in. apart	4 in. apart	6 in. apart	8 in. apart	10 in. apart	12 in. apart
3 feet	125	95	36			
4 feet	220	125	60	36	24	20
5 feet	330	225	90	70	36	25
6 feet	470	270	125	80	50	36
7 feet	630	410	170	96	70	48
8 feet	820	470	220	125	85	60
9 feet	1025	650	270	156	110	75
10 feet	1260	720	330	190	125	90
11 feet	1520	940	395	240	150	110
12 feet	1800	1025	470	270	170	125
13 feet	2100	1280	540	320	200	150
14 feet	2435	1385	630	360	240	170
15 feet	2790	1670	720	420	270	200
16 feet	3170	1800	815	470	320	215
17 feet	3570	2140	920	545	360	240
18 feet	4035	2270	1025	590	390	270
19 feet	4185	2640	1140	630	420	320
20 feet	4960	2790	1260	720	470	330

A square bed will take about the same number of bulbs. For an oval bed add length and breadth and divide by 2. For example, an oval 7 feet long by 5 feet wide will require same number of plants as a circular bed 6 feet in diameter

Please refer to our General Spring Catalogue for a complete list of the Flower and Vegetable Seeds Garden Tools and Requisites, etc., which we can supply

HOSEA WATERER, Seedsman

BELL PHONE: WALNUT 4794

714 Chestnut Street, PHILADELPHIA, PA.



Last Call for NARCISSI, SNOWDROPS, SCILLAS MUSCARI, Etc.

Federal Quarantine Bars Foreign-Grown Bulbs from the United States

January 1, 1926, is the Deadline. After that date, no Narcissus or Daffodil bulbs, no Snowdrops, no Scillas, or other bulbs known as Dutch bulbs, except Tulips and Hyacinths, will be permitted to enter the United States from any foreign country. This is the ultimatum of the U. S. Department of Agriculture under the authority of the notorious Quarantine 37.

The Department of Agriculture has turned a deaf ear to the protests, arguments, and prayers of expert bulb-growers, florists, gardeners, and flower-lovers generally. It is the contention of the Department that Daffodils are likely to bring dangerous insects into the country—or if they are not doing it now, they may at some future time—and that it is better to deprive the American people of flowers than to admit a stray bug or two. Anyway, the bars are up. After the first of next year we must do without Daffodils and other Dutch bulbs, or grow them ourselves.

This has been tried, and in spite of the most strenuous efforts of American growers, there will be a tremendous shortage of Narcissi and Daffodils for years to come. This year, every available bulb will be imported, but a short crop in Europe and the competition of importers have combined to complicate the situation.

The thing to understand clearly is that Narcissi are going to be scarce and hard to get. It means that many kinds of lovely Daffodils must disappear from American

gardens for years, if not forever. It means that all such bulbs will be high in price, and some of them unobtainable at any price. This year they are still reasonably cheap in spite of the enormous demand. Poorer bulbs will cost a lot more in years to come, if they can be got at all.

Daffodils are among the necessities. They are the gayest and cheeriest of the flowers of spring. A garden without Narcissi would be a sorry thing at best. American gardens must not be deprived of them.

The time is short. It behooves every gardener, and every garden-lover to lay in an extra-heavy supply of Narcissi this fall, to concentrate both garden energy and funds upon Narcissi while they are obtainable. Naturalize them in clumps and scattered plantings, store them in odd corners, pack the garden full of them, for present and for future enjoyment.

Double or treble the order for Narcissi this year; spend for them this season what you had planned to spend for them in the next five years. Buy them till it hurts!

GET YOUR DAFFODILS WHILE YOU CAN. BUY THIS FALL

Dutch Hyacinths

For Winter Flowering in the House. One bulb to a 5-inch pot or four to five bulbs of one variety in an 8-inch bulb-pan will prove very effective. Between September and the end of November plant the bulbs in potting soil or prepared fiber so that the tops just show above the surface. After planting, the bulbs should be placed in a dark, cool, airy place for a period of eight weeks. This develops the roots. Keep moist but not sodden. After about eight weeks have elapsed and bulbs have made some top growth, the pots may be removed to the house. Keep away from cold window draughts and drying furnace heat. By taking the pots at intervals of ten days, a succession of bloom may be enjoyed throughout the winter.

For Growing in Glasses. Set the bulbs so that the lower end merely touches the water. Put away in a cool, airy, dark place till the roots have developed; then remove by degrees to full light and air. A piece of charcoal in the water will keep it sweet.

For Outdoor Growing. Set the bulbs 5 or 6 inches apart, and top of bulb 4 inches deep. The time to plant is between October and the last of November before ground is frozen.

Price, any of the following varieties, 35 cts. each, \$3.50 per doz., \$22 per 100



La Victoire Hyacinths

GIANT EXHIBITION BULBS

These are varieties selected for their large-sized spikes, elegance of form, and beauty and richness of color. The bulbs are of mammoth size—the cream of the crop—and naturally command advanced prices. We offer this grade only in limited quantities and request early orders for them.

SINGLE RED, ROSE, AND PINK

- GENERAL DE WET.** A fine light pink; large truss.
GERTRUDE. Deep rose-pink; large, compact truss.
GIGANTEA. Light rose; spikes large and compact.
KOHINOOR. Bright pink; extra-large truss.
LADY DERBY. Rose-pink; large, compact spike.
LA VICTOIRE. Carmine-rose; large, perfect spike.
MARCONI. Deep rose; extra-large, compact truss.
MORENO. Bright pink; very large truss.
QUEEN OF THE PINKS. Brilliant, clear, bright pink; large, compact spike.
ROI DES BELGES. Bright scarlet; extra-large spike.

SINGLE YELLOW

- CITY OF HAARLEM.** Golden yellow; large, well-formed truss.
YELLOW HAMMER. Pure yellow; very fine truss.

Glasses for Growing Hyacinths

We can supply two styles of these glasses

Tall and Low in assorted colors. 35 cts. each, \$3.50 per doz.

These cannot be sent by parcel post

SINGLE BLUE

- CAPTAIN BOYTON.** Sky-blue; immense truss.
CZAR PETER. Light porcelain-blue and lavender; very fine, large truss.
DUKE OF WESTMINSTER. Rich deep blue, with white center.
ENCHANTRESS. Clear porcelain-blue; splendid spike.
GRAND MAITRE. Deep lavender-blue, with darker blue shading; large truss.
KING OF THE BLUES. Clear dark blue; large bells and splendid spike.
LORD BALFOUR. Distinct violet; large spike.
LORD DERBY. Pale porcelain-blue; compact spike.
MENELIK. Almost black; fine large truss.
PERLE BRILLANTE. Light blue; splendid large spike.
QUEEN OF THE BLUES. Clear, light porcelain-blue, extra fine.
SCHOTEL. Light blue; perfect truss. Good forcer.

SINGLE WHITE

- GRAND BLANCHE.** Blush-white; excellent large truss.
QUEEN OF THE WHITES. A pure white sport of Queen of the Blues; large trusses on strong stems.
LA FRANCHISE. Waxy white; very large bells.
LA GRANDESSE. Pure white; immense bells and truss.
L'INNOCENCE. Pure white; extra fine; large truss.
MME. KRUGER. Pure white; good truss; extra early.

If to be sent by parcel post, add postage at your zone rate. One dozen bulbs weigh 4 pounds



Bed of Hyacinths



Queen of the Pinks Hyacinths

EXTRA-SELECTED FIRST-SIZE HYACINTHS

First-size Hyacinth bulbs are suitable for both indoor and outdoor culture, being used almost exclusively for growing in pots and pans, as they force easily and bear large, well-developed trusses.

If to be sent by parcel post, add postage at your zone rate. One dozen bulbs weigh 3 pounds. See second cover page for postal rates. Price, any of the following, 30 cts. each, \$3 per doz., \$20 per 100, postage extra

SINGLE RED, ROSE, AND PINK

- CARDINAL WISEMAN.** Light carmine-rose, with large, compact spikes. One of the best varieties in its class for pots.
- GERTRUDE.** Deep rose-pink; compact spikes on good stems. A very popular forcing variety, also used for bedding.
- GIGANTEA.** One of the best blush-pink varieties; very large truss of closely set bells.
- KOHINOOR.** A lovely pink with long, handsome spikes. Bells inclined to come semi-double. A fine bedding variety.
- LADY DERBY.** Beautiful, clear rose-pink, with large, compact trusses. Early and fine for both forcing and bedding.
- LA VICTOIRE.** Shiny carmine-rose, with large, well-filled spikes. A splendid bedding variety.
- MARCONI.** Bright deep rose; short, broad trusses, borne on stiff stems. A good forcer but particularly fine outdoors.
- MORENO.** A beautiful lively pink; very large truss and bell. Splendid for pots.
- PANAMA.** Bright rose; large, well-shaped spike, set with large waxy bells. A first-class novelty.
- QUEEN OF THE PINKS.** A very lovely pink; trusses broad and large, with good-sized bells and strong stems.
- ROI DES BELGES.** Brilliant crimson-scarlet. A grand bedder.

SINGLE BLUE AND PURPLE

- CZAR PETER.** Light lavender-blue; splendid spike. One of the finest for forcing.
- CAPTAIN BOYTON.** Dark sky-blue; large bells and very fine well-filled spike.
- DR. LIEBER.** Very early lavender-blue, tinged violet; large truss. Extra fine.
- ENCHANTRESS.** Clear porcelain-blue; beautiful long spikes on strong stems. An excellent pot Hyacinth and the best light blue bedding variety.

Single Blue and Purple, continued

- GRAND LILAS.** Deep lilac, with large spikes. A splendid variety for both bedding and forcing.
- GRAND MAITRE.** Deep lavender-blue with long, compact spikes of large bells, on strong stems. One of the most popular blues. Fine for pots as well as bedding.
- KING OF THE BLUES.** Dark violet-blue; splendid, large trusses. One of the best-known blue Hyacinths. Good for late forcing and bedding.
- MARIE.** Very dark blue, almost purple; well-formed trusses. A splendid bedder and good for forcing.
- QUEEN OF THE BLUES.** Clear, light porcelain-blue; a strong-growing variety with large, well-formed trusses. One of the best of its color, particularly for bedding.

SINGLE WHITE

- ARENTEINE ARENSEN.** One of the finest whites; long spikes with large, snowy white bells. Early, fine for forcing, and a good bedder.
- CORREGGIO.** Pure white with long, well-filled trusses of large, substantial bells.
- HEIN ROOZEN.** Pure white; very large broad truss. Good for forcing. A splendid novelty.
- LA GRANDESSE.** Pure white with fine, compact spikes. The best late forcing variety and fine for bedding as well.
- L'INNOCENCE.** This is the most satisfactory all-round pure white; compact spikes with large bells. Does well indoors and out.
- MME. KRUGER.** Pure white; large bells and spike. Early and excellent for forcing and bedding.
- QUEEN OF THE WHITES.** A pure white sport of Queen of the Blues. Large trusses on strong stems. Early and a splendid forcer.

SINGLE YELLOW

- CITY OF HAARLEM.** Golden yellow; large, well-formed truss.
- KING OF THE YELLOWS.** Rich deep yellow.
- YELLOW HAMMER.** The best-known and most popular yellow for forcing. Fine, compact trusses with medium-sized bells.
- Price, any of the above, 30 cts. each, \$3 per doz., \$20 per 100, postage extra

DOUBLE HYACINTHS

Extra-Selected, First-Size Bulbs

While Double-flowering Hyacinths do not, as a rule, produce so fine spikes as the single sorts offered on this page, yet they are exceedingly handsome and deserve extensive cultivation. The varieties listed below are those which we have found by actual tests to be the most satisfactory.

Any of the following, 30 cts. each, \$3 per doz., postage extra

DOUBLE PINK AND ROSE

- CHESTNUT BLOSSOM.** Light pink; extra-large spike.
- PRESIDENT ROOSEVELT.** Deep rose; large spike.

DOUBLE WHITE

- LA GRANDESSE.** The best double pure white.
- PRINCE OF WATERLOO.** Pure white; large spike of large bells with slightly rose center.

DOUBLE BLUE

- GENERAL KOHLER.** Bright blue. One of the best.
- VAN SPEYK.** Light blue; compact spike; very large bells.

DOUBLE YELLOW

- SUNFLOWER.** Considered the finest double pure yellow.

Prepared Holland Bulb Fiber

This fiber is an ideal medium in which to grow bulbs. It is clean and free from odor and contains sufficient plant-food for the bulbs until after they have bloomed. Bulb Fiber is used in the same way as potting soil, except that it should not be packed down firmly in the pots. By using it, bulbs may be grown in any sort of ornamental bowl or receptacle as no drainage is required. Keep the fiber moist, but not sodden or wet. Qt. 20c., 1/2pk. 50c., pk. 75c., bus. \$2.50. If to be sent by parcel post, add postage at your zone rate—one peck weighs 4 pounds.



French Roman Hyacinths

MINIATURE OR DUTCH ROMAN HYACINTHS

These are small, single-flowering Dutch Hyacinths and quite distinct from the French Romans. Excellent for growing in pots, pans, or boxes, blooming early and freely. They may be planted close together in pots, pans, or boxes, with charming effect.

- | | |
|-------------------------------------|--|
| GERTRUDE. Dark pink. | LA GRANDESSE. Pure white. |
| GIGANTEA. Light rose. | KING OF THE BLUES. Deep blue. |
| GRAND MAITRE. Lavender-blue. | QUEEN OF THE BLUES. Clear light porcelain-blue. |
| ROI DES BELGES. Scarlet. | YELLOW HAMMER. Yellow. |
- Any of the above Miniature Named Hyacinths, 15 cts. each, \$1.25 per doz., \$9 per 100

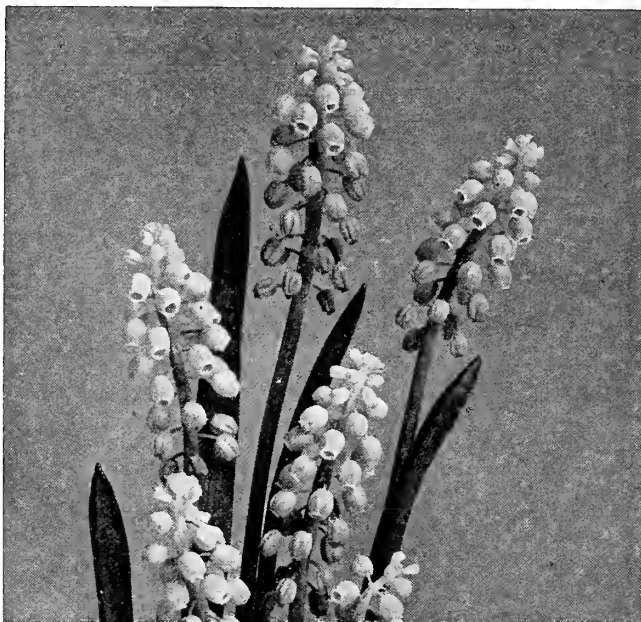
EARLY FRENCH ROMAN HYACINTHS

The flowers are delightfully fragrant, and each bulb will throw up three to four spikes. For forcing, three or four bulbs are generally planted in a 5-inch pot in September, in good soil or fiber. The pots must be kept in a cool and dark place until they fill with roots, when the flower-spikes can be rapidly developed by exposure to light and moderate heat. They are very easily grown and extremely early, and by making successive plantings they may be had in flower all through the winter.

	Doz.	100
Pure White. Mammoth bulbs, XXX	\$2 00	\$15 00
Pure White. Extra selected bulbs, XXXX	2 50	17 50
Dark Blue. Largest bulbs	1 75	11 50
Dark Rose. Largest bulbs	1 75	11 50
Light Rose. Largest bulbs	1 75	11 50

FEATHERED HYACINTHS

An odd and interesting variety, growing about a foot high, producing spikes of a real violet-blue color. The petals of the flower are so narrow that they look like feathers, hence the name "Feathered Hyacinth." They are splendid for the garden and for naturalizing. 60 cts. per doz., \$3.75 per 100, \$32.50 per 1,000.



Grape Hyacinths

SECOND SIZE, OR NAMED BEDDING HYACINTHS

These are smaller than our extra-selected first-size bulbs but are fine flowering stock and admirably adapted for pot-culture, also for high-grade bedding where distinct shades of color are desired. If to be sent by Parcel Post, add postage at your zone rate. One dozen bulbs weigh 2 pounds

SINGLE RED AND ROSE

- | | |
|----------------------------------|---|
| GERTRUDE. Deep rose-pink. | ROI DES BELGES. Brilliant crimson-scarlet. |
| MORENO. Bright pink. | |

SINGLE WHITE

- | | |
|--|----------------------------------|
| GRANDEUR A MERVEILLE. Rosy white. | LA GRANDESSE. Pure white. |
| BRITISH QUEEN. Pure white. | L'INNOCENCE. Pure white. |

SINGLE BLUE

- | |
|--|
| GRAND MAITRE. Deep lavender-blue. |
| KING OF THE BLUES. Dark blue. |
| QUEEN OF THE BLUES. Light porcelain-blue. |

SINGLE YELLOW

- | |
|------------------------------------|
| YELLOW HAMMER. Pure yellow. |
|------------------------------------|
- Price, any of the above, 25 cts. each, \$2.50 per doz., \$16 per 100

SPECIAL UNNAMED HYACINTHS

For Bedding or Pot-Culture

These are much used for outdoor bedding, but can also be utilized for pot-culture, giving excellent results. We offer only the best grade of stock, true to color, and well ripened bulbs.

If to be sent by Parcel Post, add postage at your zone rate. One dozen bulbs weigh 2 pounds; 100 bulbs, 16 pounds (packed weight).

- | | |
|-----------------------------|--------------------------|
| Red Shades | Light Blue Shades |
| Rose and Pink Shades | Dark Blue Shades |
| Bluish-White | Yellow Shades |
| Pure White | All Colors, Mixed |

Any of the above Unnamed Hyacinths at 20 cts. each, \$2 per doz., \$13.50 per 100

ITALIAN HYACINTHS

The flowers are similar to those of the white Roman, but the spikes are larger and the Italian is later; excellent for succession. **White.** Largest bulbs \$1.75 per doz., \$11.50 per 100.

GRAPE HYACINTHS

These very curious and pretty little Hyacinths are perfectly hardy, are of the easiest culture, and thrive and increase in either sunny or partially shaded positions in the garden. When naturalized in little colonies where they can remain undisturbed for several years, the effect is very pretty, while as edgings they are most charming. All are also adapted for winter flowering in the house.

- | |
|---|
| Blue. 40 cts. per doz., \$2.25 per 100, \$20 per 1,000. |
| White. 50 cts. per doz., \$3 per 100, \$27.50 per 1,000. |
| Heavenly Blue. A new type with larger flowers of a bright sky-blue and delightfully fragrant. Desirable for cutting and of splendid effect massed in the garden or border. 60 cts. per doz., \$3.25 per 100, \$25 per 1,000. |

Tulips

For Outdoor Growing. Set the bulbs 4 to 5 inches deep and 5 to 6 inches apart. Plant in October or November before the ground freezes in good garden soil. Before very severe weather comes on, cover the beds with straw, leaves or manure, to protect them from the frost; this should be removed when danger from hard frost is past in the spring.

For Pot-Culture. Use a good potting soil or fiber and set the bulbs so that the tops just show above the surface. The time to pot the bulbs is between September and the last of November. Use three or four bulbs to a 5-inch pot; six or seven to a 7-inch bulb-pan, or ten bulbs to an 8-inch bulb-pan. Keep pots in a dark, cool, airy place until roots have developed and top growth has started; then the bulbs can be placed in the light. We send out Tulip bulbs of selected quality only. The height in inches follows the name of the variety.

SINGLE EARLY TULIPS

	Doz.	100	1,000
Albion (White Hawk). 13 in. One of the best white Tulips.....	\$0 75	\$5 25	\$45 00
Artus. 10 in. Bright scarlet; dwarf. A splendid bedder.....	70	4 00	35 00
Belle Alliance. 12 in. Brilliant scarlet; large flower; excellent for forcing and bedding.....	75	5 25	45 00
Brilliant Star. 12 in. Brilliant vermilion-scarlet. Best scarlet for early forcing.....	1 10	7 25	65 00
Chrysolora. 12 in. Pure golden yellow. A good bedder.....	80	4 75	40 00
Cottage Maid. 11 in. Lovely rose-pink shaded with white. Excellent for forcing and for bedding.....	85	5 00	45 00
Couleur Cardinal. 13 in. Brilliant crimson. Splendid for forcing and for bedding.....	1 00	6 75	62 50
Cramoisi Brillant. 12 in. Brilliant scarlet. Splendid for forcing or bedding.....	70	4 00	35 00
De Wet (Fireglow). 16 in. A very handsome golden flower, having a flush of fiery orange-scarlet. It is very distinctive and is a true orange color when forced.....	3 00	20 00	
Duchesse de Parma. 15 in. Orange border. Very beautiful Tulip.....	85	5 50	47 50



Bed of Single Early Tulips

	Doz.	100	1,000
Ibis. 13 in. This Tulip is a very beautiful large, deep brilliant pink. A superb variety for forcing and a good bedder.....	\$1 25	\$9 00	\$85 00
Joost Van Vondel, White. 11 in. One of the largest and most beautiful pure white sorts.....	85	5 50	48 00
Keizerkroon. 16 in. Crimson-scarlet, bordered with clear yellow; large and very beautiful. Mother bulbs.....	1 20	7 75	70 00
La Reine. 13 in. White, lightly shaded with rose. Splendid for both bedding and forcing.....	60	3 50	30 00
Max Havelaar. 13 in. Blood-orange, flushed salmon-rose; when forced the color becomes a beautiful cherry-red.....	1 50	8 50	80 00
Mon Tresor. 12 in. Rich golden yellow; large and perfect form.....	90	5 75	50 00
Ophir d'Or. 12 in. Golden yellow; large flower; grand bedder.....	85	5 25	45 00
Pink Beauty. 13 in. A large and lovely Tulip; glowing rose-pink, outer petals flushed with white.....	1 25	9 00	85 00
Prince of Austria. 14 in. Fine orange-red; sweet scented. One of the best forcers and a splendid bedder.....	90	5 75	50 00
Proserpine. 14 in. Brilliant carmine-rose; very large flower. Mother bulbs.....	1 15	8 00	76 00
Rising Sun. 16 in. Golden yellow; very large flower on a tall stem.....	1 10	7 00	65 00
Rose Gris-de-lin. 11 in. Delicate rose, flushed white. Fine both for forcing and bedding.....	70	4 00	36 00
Rose Luisante. 11 in. Beautiful deep rose; large perfect flower. Fine for forcing or bedding.....	1 10	7 25	65 00
Sir Thomas Lipton. 14 in. A grand flower of rich purplish red, shading off to glossy blood-crimson at edges.....	90	6 00	57 50
Vermilion Brilliant. 13 in. True, Brilliant vermilion-scarlet. The most popular one of its color; large flower; very early.....	1 10	7 25	65 00
White Beauty. 13 in. A pure white sport of Pink Beauty; large.....	1 20	7 75	70 00
Yellow Prince. 13 in. Bright yellow; sweet scented. Excellent for forcing and bedding.....	70	4 50	38 00
Superfine Mixture. Containing many varieties.....	40	2 75	25 00

DOUBLE EARLY TULIPS

The culture of the double varieties is just as easy as that of the singles. Planted in pans, they make attractive winter-bloomers, and last even longer than the single varieties. Placed in the open border they come into bloom slightly later than the Early Single Tulips.

	Doz.	100	1,000
Aurora. 12 in. Crimson-red, shaded deep salmon; beautiful well shaped flowers. Good for forcing or outdoors.....	\$3 50	\$25 00	
Crown of Gold. 13 in. Large, very double, rich golden yellow flower, shaded orange.....	90	5 75	\$50 00
Golden King. 13 in. Beautiful pure yellow.....	1 00	6 75	60 00

Postage on all Tulips. If wanted by parcel post, add postage at your zone rate (see second cover page). One dozen bulbs weigh 1 pound; 100 bulbs, 8 pounds.



May-Flowering Tulips

Double Early Tulips, continued

Imperator Rubrorum. 14 in. Brilliant scarlet. Fine for forcing and one of the grandest for bedding..	Doz.	100	1,000
Lucretia. 14 in. Beautiful deep rose. Splendid forcer	85	5 25	45 00
Murillo. 12 in. Delicate rose-pink, flushed white. Fine for bedding, and excellent for forcing.	70	4 25	37 00
Peach Blossom. 12 in. Bright rose-pink, flushed white, deepening with age to carmine-rose; large. A sport of Murillo. Excellent for pots.	1 75	12 00	
Schoonoord. 12 in. Snow-white sport of Murillo. One of the finest...	85	5 50	48 00
Tea Rose (Safrano). 12 in. Soft pale yellow, shaded apricot.	85	5 50	48 00
Toreador. 13 in. Reddish bronze and orange. Very handsome.	1 25	8 50	75 00
Tournesol, Yellow. 12 in. Yellow shaded orange.	85	5 75	52 00
Tournesol. 12 in. Rich scarlet, edged yellow. Very showy.	85	5 75	52 00
Superfine Mixture. All colors	60	3 25	26 00

MAY-FLOWERING OR COTTAGE TULIPS

We have made a selection of the most desirable varieties in this class, and they deserve a place in every garden. Some of the most delicate shades are found in this family of Late-flowering Tulips, as well as some of the most brilliant. All are long and stiff-stemmed, and are admirably adapted for cutting purposes.

Bouton d'Or (Ida). 20 in. Pure deep yellow; large, globe-shaped flowers.	Doz.	100	1,000
Blue Flag (Double). 16 in. Soft violet-purple. A magnificent flower of great beauty and size.	75	4 75	40 00
Carnation. 18 in. True English Picotee. White changing to carmine-rose.	85	5 75	52 50
Dorris. 24 in. Soft rosy lilac, flushed silvery gray.	75	4 75	42 50
Ellen Willmott. 25 in. Soft creamy yellow.	75	5 00	45 00

Fairy Queen. 25 in. Large flower. Rosy heliotrope, margined with yellow.	Doz.	100	1,000
Gesneriana Lutea. 26 in. Immense golden yellow.	65	4 00	35 00
Gesneriana Major. 26 in. Very large brilliant scarlet flowers, with blue-black center.	65	4 00	36 00
Golden Spire. 18 in. Enormous deep golden yellow flower, edged with orange-scarlet.	1 00	6 75	62 50
Grenadier. 21 in. Brilliant orange-red. A new Tulip of great beauty. Flowers long, borne on very graceful stems.	1 50	10 00	
Hammer Hales. 24 in. Golden brown, suffused with old rose; inside apricot with yellow edge.	1 50	10 00	
Inglescombe Pink. 25 in. Beautiful long flowers of bright rose-pink.	75	4 50	40 00
Inglescombe Scarlet. 20 in. Brilliant scarlet with a black base.	75	4 50	40 00
Inglescombe Yellow. 23 in. A large globular, rich yellow flower.	65	4 00	35 00
Isabella. 16 in. Creamy white and pink, changing to carmine-rose.	75	4 50	40 00
John Ruskin. 18 in. Deep rose-salmon, edged pale yellow; inside lilac, suffused with soft rose and yellow margin.	85	5 50	47 50
La Merveille. 20 in. Salmon-rose, shaded orange-red; fragrant.	65	4 00	35 00
La Reve (Hobbema). 13 in. Salmon-pink with lilac shade. Beautiful.	1 15	8 00	72 50
Moonlight. 24 in. Enormous light soft yellow flower.	80	5 25	45 00
Mrs. Moon. 25 in. A magnificent and immense Tulip of rich orange-yellow.	90	5 75	50 00
Norham Beauty. 20 in. Dull lilac with golden bronze reflex. Very distinct.	90	5 75	50 00
Orange Beauty. 20 in. Enormous brilliant orange-red flower.	90	5 75	50 00
Picotee (Maiden's Blush). 24 in. White, penciled and margined with pink.	70	4 25	36 00
Retroflexa. 17 in. Splendid yellow flower, with elegantly recurved petals. Fine for cutting.	75	4 50	40 00
Royal White. 16 in. Large long flower of white touched with primrose through the outside center of petals. A fine Tulip.	1 00	7 00	65 00
Striped Beauty (Summer Beauty). 20 in. Rose flaked crimson and white; large and showy flowers on tall stems.	90	5 75	50 00
The Fawn. 20 in. A unique shade of fawn tinged with silvery dove-gray.	60	4 00	35 00
Walter T. Ware. 18 in. The deepest and richest of all the yellow Cottage Tulips. A remarkably beautiful flower of great substance.	4 50	35 00	
Extra-Fine Mixed. All colors	50	3 50	27 50

PARROT TULIPS

This class of Late-flowering Single Tulips is very suitable for cutting purposes. The flowers, quaintly shaped and borne on long stems, remain in good condition for a long time after being cut. Parrot Tulips are large, of striking colors, growing 14 to 15 inches high.

ADMIRAL OF CONSTANTINOPLE. Dark red, shaded and tipped orange.	Doz.	100
CRAMOISI BRILLANT. Brilliant crimson.	65	4 25
LUTEA MAJOR. Yellow, striped crimson and green.	65	4 25
MARKGRAAF VAN BADEN. Golden inside, feathered brilliant scarlet; purple, and green outside.	65	4 25
PERFECTA. Yellow, scarlet, and green.	65	4 25
I NEST MIXED. All colors.	55	3 50



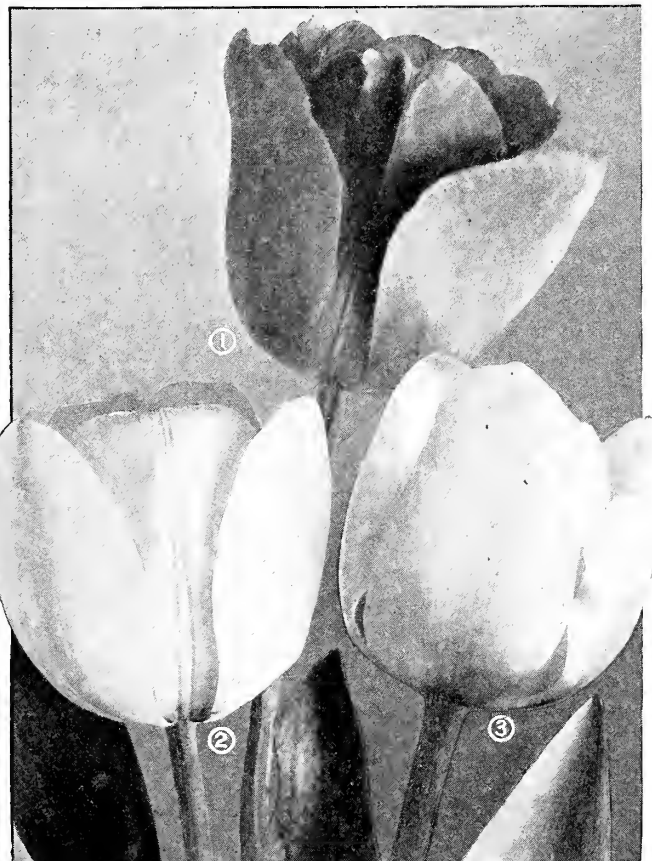
Darwin Tulips

DARWIN TULIPS

For the borders, among other hardy flowers, for isolated grouping against a background of shrubs, or for combinations of delicate colors for effects of contrast in the flower garden, the Darwins are matchless. They flower about the middle of May, a time in which the spring flowers are over and the summer flowers have not yet come in. They last a very long time when cut.

Ariadne.	28 in. Glowing rose-crimson shaded scarlet, blue base	Doz.	100	1,000
		\$1 00	\$6 00	\$50 00
Baronne de la Tonnaye.	30 in. A long beautiful flower; clear carmine rose at the mid-rib, toning off to soft pink at the edges	70	4 50	37 50
Bartigon.	28 in. Large flowers of fiery crimson with white base	1 00	6 00	50 00
Calliope.	30 in. Fine soft rose, good for forcing	75	4 50	37 50
Centenaire.	30 in. Rich violet-rose with blue base. A magnificent flower for the border and good for forcing	1 25	9 00	80 00
Clara Butt.	22 in. A large flower of remarkable beauty; an exquisite shade of soft salmon-pink shaded rose	65	4 00	35 00
City of Haarlem.	27 in. Largest, and easily the best bright red Darwin Tulip. Huge flowers on long, sturdy stems; glowing scarlet with slate-blue base	3 50	25 00	
Donders.	25 in. Dark crimson, violet and white base	85	5 00	47 50
Dream.	26 in. Large cup-shaped flower of heliotrope with silvery lilac margin; blue base	1 00	6 25	55 00
Europe	(Salmon King). 24 in. Large, globular flower of glowing salmon-scarlet shaded rose	1 00	6 00	55 00
Faust.	30 in. Deep purple-maroon; large and brilliant	1 10	7 50	60 00
Flamingo.	26 in. Lovely flesh-pink tinted rose, distinct color	1 00	6 00	55 00
Frans Hals.	29 in. Enormous violet-blue flower on a strong stem	1 10	7 50	70 00
Glow	(Claude Gilot). 24 in. Dazzling vermilion-scarlet with blue base, edged white	85	5 75	55 00
Gretchen	(Margaret). 22 in. Lovely globular flower of delicate blush and silvery pink	65	4 00	37 50
La Tristesse.	26 in. Bluish slate color, white base; very distinct	75	5 00	45 00

La Tulipe Noire	(The Black Tulip). 26 in. The "blackest" of all Tulips; a large broad flower of glossy black	Doz.	100	1,000
		\$1 00	\$6 00	\$50 00
Le Notre.	26 in. Beautiful shade of bright pink; blue base, very large flower on a strong stem	1 10	7 50	67 50
Marconi.	27 in. Deep purple when the flower first opens, gradually changing to ashy purple as the flower ages; pure white base	85	5 00	47 50
Massenet.	30 in. Pale rose, margined to bloom. creamy white. One of the last	1 25	9 00	85 00
Mme. Krelage.	28 in. A grand flower of purplish rose, broadly margined with blush-pink, white base	1 00	6 00	50 00
Mr. Farncombe Sanders.	30 in. Brilliant orange-scarlet; extra fine	85	5 50	50 00
Mrs. Potter Palmer.	24 in. A beautiful large new variety of deep rich violet-purple with a bluish sheen on the outer petals	85	5 00	45 00
Nauticus.	30 in. A large, handsome flower of glowing deep cherry-rose; center violet, shaded bronze	65	4 00	35 00
Nora Ware.	22 in. Dainty silvery lilac, deepening toward the center	75	4 50	40 00
Painted Lady.	26 in. One of the best of the white Darwins	75	4 50	40 00
Philippe de Commines.	26 in. Large, velvety dark purple; flower on stiff stem	90	5 50	45 00
Pride of Haarlem.	28 in. Magnificent flower of immense size; coloring brilliant salmon-rose, shaded with scarlet; blue base	65	4 00	37 50
Princess Elizabeth.	26 in. A long rose-bud-shaped flower of the deepest pink on a stiff stem	1 15	8 00	70 00
Professor Rauwenhof.	28 in. Deep cherry-rose, with salmon glow inside; bright blue base; extra large. One of the finest for early forcing	1 00	7 50	70 00



1. Pride of Haarlem. 2. Clara Butt. 3. La Tristesse

Darwin Tulips, continued

Psyche. 26 in. A very large flower of rich rose color; inside shaded silvery rose; center pale blue.	Doz.	100	1,000
Rev. H. Ewbank. 20 in. A large, broad flower of silvery lavender, shading toward the center into bluish heliotrope.		85	4 75 42 50
Ronald Gunn. 28 in. Velvety violet, edged lavender, with white base, the general effect being almost true blue.	1 10	7 50	70 00
Sieraad van Flora. 25 in. Bright red, with blue base. Magnificent flower of a very distinct color.	80	5 50	50 00
Suzon. 28 in. Center of petals buff-rose, shading to blush at the margin, with white base, delicately marked blue.	75	5 00	45 00
The Sultan. 22 in. Glossy blackish maroon.	65	4 00	37 50
Valentine. 22 in. Heliotrope, shaded violet. Flowers beautifully shaped and carried on long stems.	1 10	7 50	70 00
White Queen. 24 in. Buds tinged with pink; mature flowers almost pure white. The best-known white Darwin for bedding and forcing.	85	5 50	45 00
William Copland. 25 in. Delicate lavender. The best early forcing variety.	85	5 50	50 00
William Pitt. 24 in. One of the largest and grandest of the Darwins. Brilliant carmine, center of petals over-spread with dark red.	1 15	8 00	75 00
Mixed Darwins. All colors.	60	3 50	30 00

DUTCH BREEDER TULIPS

May-flowering

Breeder Tulips are very similar in habit to the Darwins, and flower at the same time. Their chief characteristic is their immense blooms borne on strong, stiff stems, many of them longer than the most gigantic Darwins. The revival of the taste for art colors has made these Tulips strong favorites with American enthusiasts, who find in their bronze, buff, and brown shades excellent material for contrasting with the light and bright colors of the Darwins.

Bacchus. 32 in. Dark violet-blue, the outside of the petals having a darker bloom; base starred white. Quite the nearest approach to dark blue in late Tulips.	Doz.	100	1,000
Bronze Queen. 28 in. Soft golden bronze; large flower of sturdy habit. A very exquisite color when forced and splendid for the border.	75	5 00	\$45 00
Cardinal Manning. 28 in. A splendid shade of rosy violet, with a slight edge of bronze; large-sized flower of fine form.	80	5 50	50 00
Chestnut. 24 in. Deep chestnut-brown, shading to deep mahogany inside with black base. Very distinct and makes a fine contrast with yellow.	80	5 50	50 00
Dom Pedro. 24 in. Coffee-brown with a narrow edge of golden brown; inside rich mahogany with olive base. Flowers large and fragrant.	1 25	8 00	75 00
Godet Parfait. 30 in. Dark blue-purple, with white base and blue halo; very large flower of striking color.	1 50	10 00	
Golden Bronze. 24 in. Old-gold, shaded bronze. A large, well-formed flower of attractive appearance.	1 00	7 00	65 00
Klopstock. 26 in. Clear violet-blue, shaded lilac; large, long-shaped flower.	1 50	10 00	90 00
La Singuliere. 25 in. Silvery white, flushed at the margin with dark maroon-crimson, which gradually suffuses the entire petal as the flower ages.	90	6 50	60 00
Louis XIV. 32 in. An even tone of dark purple, with a broad margin of golden bronze. A very large flower of wonderful substance.	3 25	22 50	
Lucifer. 28 in. Rich rosy orange, edged orange-scarlet. A brilliant flower of majestic form, on a tall stem.	2 25	15 00	
Medea. 18 in. Salmon-carmine. Very beautiful.	75	5 00	45 00

Panorama (Fairy). 26 in. One of the best flowers of large size; deep orange-red or terra-cotta shaded mahogany.	Doz.	100	1,000
Prince of Orange. 25 in. Large, showy flowers; terra-cotta, edged orange with yellow base and black center.	1 25	8 00	70 00
Professor Schotel. 23 in. Bright violet, shaded gray with yellow base.	1 50	10 00	90 00
Velvet King (Dreadnought). 26 in. Immense flowers of rich, royal deep purple, held erect on tall, stout stiff stems and lasting in good condition for a long time.	1 75	12 00	
Mixed Breeders.	70	4 00	35 00

REMBRANDT TULIPS

These Late- or May-flowering Garden Tulips are in reality Darwin Tulips which have "broken" into permanent variegations—flowers of various rich colors are striped, blotched, and marked with different shades and colors.

BUTTERFLY. Soft lilac, with deep carmine stripe. \$1.10 per doz., \$6.50 per 100.

RED PRINCE. Fiery red flames on rosy ground. \$1.10 per doz., \$6.50 per 100.

CHOICE MIXED VARIETIES. 75 cts. per doz., \$5 per 100, \$45 per 1,000.

ROSE BYBLEMEN TULIPS

Magnificent late May-flowering Garden Tulips, producing immense, perfectly formed flowers on tall stems; coloring, white ground with beautiful stripes and markings of crimson, pink, scarlet, and rose.

CHOICE MIXED ROSE BYBLEMENS. 75 cts. per doz., \$5 per 100, \$45 per 1,000.

VIOLET BYBLEMEN TULIPS

Large, late May-flowering Garden Tulips, blotched, striped, or feathered with blue, lilac, violet, purple, or black on white ground.

CHOICE MIXED VIOLET BYBLEMENS. 75 cts. per doz., \$5 per 100, \$45 per 1,000.

SPECIES TULIPS

CLUISIANA. The "Little Lady" Tulip. A variety from Asia Minor. Outer petals cherry-red, inner petals white with violet. This variety may be used for late forcing or when planted outside should be planted 6 inches deep. Grows about 8 inches in height. \$1 per doz., \$7 per 100, \$65 per 1,000.



Bed of Breeder Tulips

NARCISSI

Possibly no spring-blooming bulbs are more popular than the Narcissi. They may be grown either indoors or out. The varied forms, from the dainty *Narcissus poeticus* to the great trumpet-shaped flowers of King Alfred, offer the gardener a selection of flowers that can be had with no other bulbs. The bulbs can be grown in any garden soil, or planted in groups among perennials or shrubs. Once planted, they need no further attention, and will increase in strength and beauty from year to year. For indoor blooming Narcissi may be treated in the same manner as hyacinths.

LARGE TRUMPET NARCISSI

These are select varieties, suitable for garden culture or growing in pots.

Bicolor Victoria. A Bicolor famous for its large and durable flowers which stand boldly erect; broad perianth of creamy white; large, broad fluted trumpet of rich yellow.

	Doz.	100	1,000
Large Bulbs.....	\$1 00	\$6 50	\$57 50
Mammoth Bulbs.....	1 25	9 00	85 00

Bicolor Victoria. French-grown. We also offer a selected stock of this variety grown in the south of France for earliest forcing. \$1.50 per doz., \$10 per 100.

Cervantes. A very early variety. Perianth clear sulphur; trumpet yellow and nicely frilled. \$1.25 per doz., \$9 per 100.

Emperor. Perianth deep primrose-yellow; trumpet rich yellow; a very large flower. Excellent for naturalizing or forcing.

	Doz.	100	1,000
Large Bulbs.....	\$1 00	\$6 50	\$57 50
Mammoth Bulbs.....	1 25	9 00	85 00

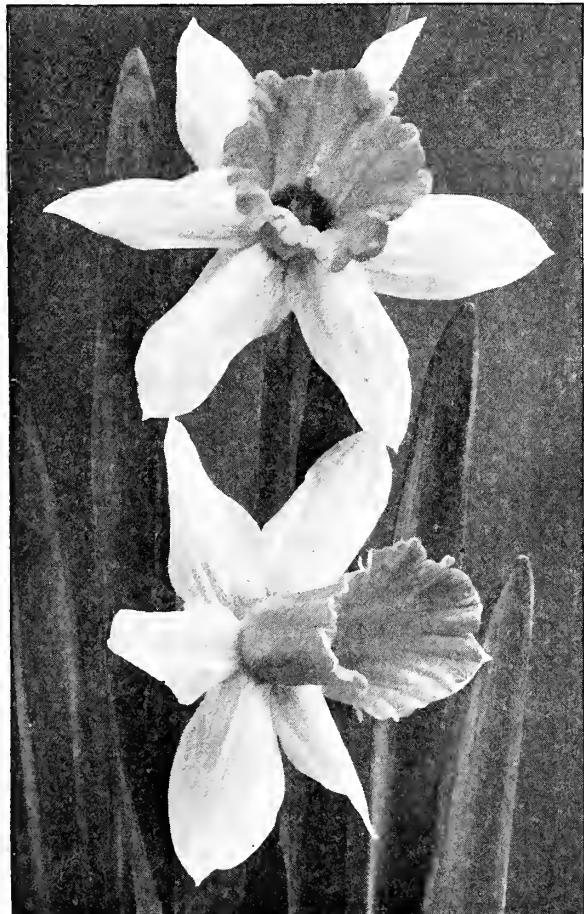
Empress. White perianth of great substance; trumpet rich chrome-yellow. Showy for border or naturalizing. Does equally well forced.

	Doz.	100	1,000
Large Bulbs.....	\$1 00	\$6 50	\$57 50
Mammoth Bulbs.....	1 25	9 00	85 00

Giant Princes. One of the most popular; perianth sulphur-yellow; trumpet rich yellow. As a forcing variety it is superior in every way, and a fine sort for naturalizing. \$1 per doz., \$6.50 per 100, \$60 per 1,000.



Van Waveren's Giant Narcissi



Glory of Leiden Narcissi

Glory of Leiden. Perianth rich yellow, broad and spreading; very long trumpet of golden yellow; enormous flower of great vigor and substance and the easiest culture. \$1.10 per doz., \$7.50 per 100, \$70 per 1,000.

Golden Spur. A very good variety, both perianth and trumpet being of a rich yellow color. It is of unusually robust habit and unsurpassed for garden, pots, or forcing.

	Doz.	100	1,000
Large Bulbs.....	\$1 00	\$6 50	\$57 50
Mammoth Bulbs.....	1 25	9 00	85 00

Golden Spur. French-grown. A strain of the above described variety grown in the south of France and used here for early forcing. \$1.50 per doz., \$10 per 100.

King Alfred. This is considered the largest and finest deep golden yellow Trumpet variety. A tall, strong grower, with magnificent frilled trumpet and large perianth, all of a uniform rich golden yellow.

	Doz.	100
Large Bulbs.....	\$2 50	\$15 00
Mammoth Bulbs.....	3 00	20 00

Mme. de Graaff. Perianth pure white; trumpet opens primrose but turns white. A beautiful flower of graceful carriage. \$1.25 per doz., \$7.50 per 100, \$65 per 1,000.

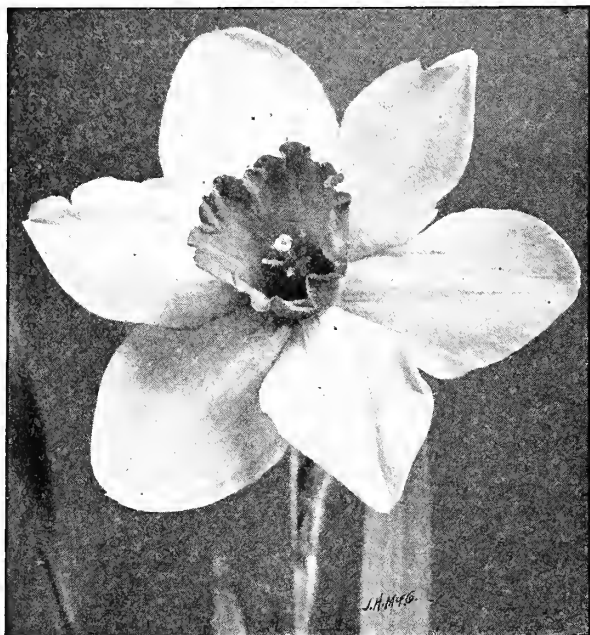
Olympia. This remarkably fine Daffodil might briefly be described as a greatly improved Emperor, being much larger and of a richer, deeper color. \$3.25 per doz., \$20 per 100.

Spring Glory. Clear white perianth with long petals of splendid form; long trumpet of deep yellow, well reflexing at the brim. \$2.25 per doz., \$15 per 100.

Trumpet Major. A large and shapely flower of a rich yellow color throughout. Comes into bloom early and is excellent for forcing, bedding, or naturalizing. 75 cts. per doz., \$5 per 100, \$45 per 1,000.

Van Waveren's Giant. This is the largest Narcissus in cultivation. Perianth soft primrose-yellow with an immense bright yellow trumpet fringed at the rim. Strong, vigorous grower, and just as satisfactory for growing in pots as in the garden. 35 cts. each, \$3.75 per doz., \$25 per 100.

Giant Trumpets in Mixture. A splendid mixture for naturalizing. 60 cts. per doz., \$4 per 100, \$35 per 1,000.



Sir Watkin Narcissus

MEDIUM TRUMPET NARCISSI

A beautiful class, with large, sweet-scented flowers borne upright on long and strong stems. The perianth is composed of large petals, and the cup is of medium length. The bulbs are hardy and if planted deep enough will withstand very severe winter weather. This type of Narcissi is extensively used for naturalizing among shrubbery. They are also very showy planted in beds and are easily grown in pots for winter and spring blooming.

Barrii Conspicuus. Large, soft yellow perianth; short cup, edged orange-scarlet. A popular and distinct variety. 90 cts. per doz., \$5.25 per 100, \$45 per 1,000.

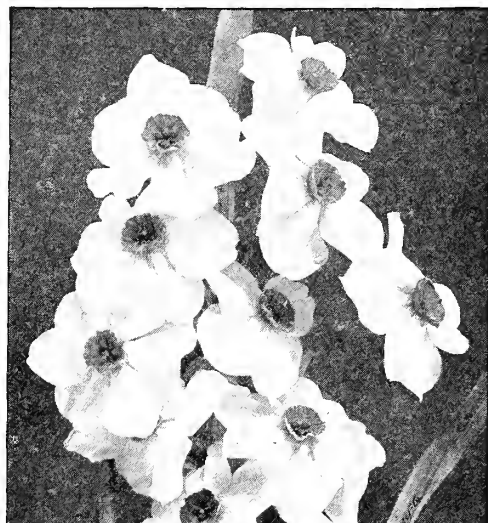
C. J. Backhouse. Yellow perianth; orange-scarlet cup. 95 cts. per doz., \$5.75 per 100.

Cynosure. Primrose perianth, changing to white; orange cup. 65 cts. per doz., \$4.50 per 100, \$40 per 1,000.

Gloria Mundi. Yellow perianth; orange-scarlet cup. Extra fine. Splendid for cutting. \$1.10 per doz., \$7.50 per 100.

Lucifer. A large-flowering variety with white perianth and cup of glowing red-orange; strong grower. \$1 per doz., \$7 per 100.

Mrs. Langtry. A free-flowering variety with broad white perianth and white cup opening pale primrose. 60 cts. per doz., \$4 per 100.



Narcissus Poetaz

Medium Trumpet Narcissi, continued

Sir Watkin. Primrose perianth; crown yellow, tinged bright orange. This is the largest and most popular of the short-cup Narcissi; perfectly hardy and recommended for growing in pots, beds, or borders.

	Doz.	100	1,000
Large Bulbs	\$1 10	\$7 50 \$65 00
Mammoth Bulbs	1 25	9 00 85 00

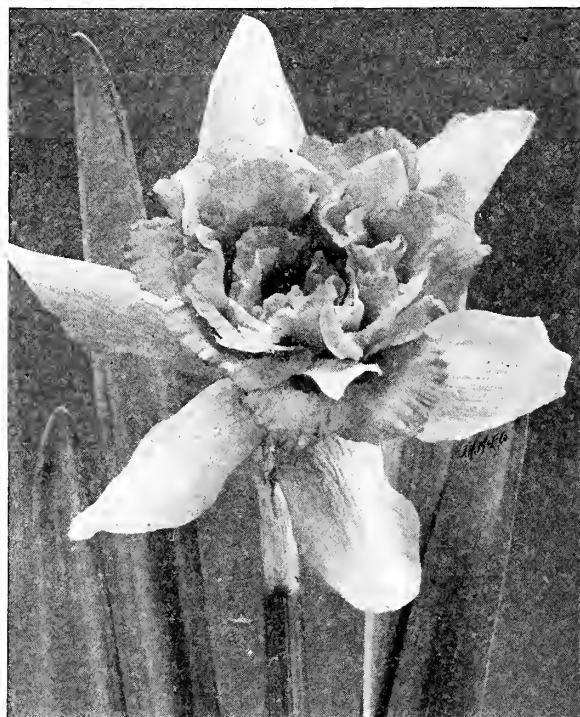
White Lady. A grand giant-flowering variety. Virtually a white Sir Watkin. Large, broad, pure white perianth; bold frilled cup of pale citron passing to white. \$1.10 per doz., \$7.50 per 100.

DOUBLE NARCISSI, OR DAFFODILS

The double varieties are particularly well adapted for winter forcing and keep a long time as cut-flowers. Grown in the open they are suited for planting in solid beds, or they may be naturalized either in the lawn, the meadow, or the woodland. A clump here and there in the perennial makes a very attractive showing.

Alba plena odorata. A sweet-scented, pure white variety called Double Poet's Narcissus. It flowers later than many of the other Daffodils, and is not desirable for forcing, but makes a handsome show bedded among perennial plants and shrubbery. 75 cts. per doz., \$4.75 per 100, \$40 per 1,000.

Incomparable, Double. The color is yellow and orange, and it makes an attractive cut bloom. Its greatest value is for outdoor planting, as it does not force so well. 85 cts. per doz., \$5.25 per 100, \$45 per 1,000.



Double Narcissus

Orange Phoenix. Eggs and Bacon. Beautiful double white flowers with orange center. Splendid for pot culture and cutting. \$1 per doz., \$6.50 per 100, \$55 per 1,000.

Sulphur (Silver) Phoenix. Codlins and Cream. Large creamy flowers with sulphur center. \$1 per doz., \$6.50 per 100, \$55 per 1,000.

Double Von Sion. The true "Double Yellow Daffodil." Rich golden yellow perianth and trumpet. This is the old favorite so highly prized in old-fashioned gardens.

	Doz.	100	1,000
First Size Bulbs	\$0 70	\$4 50 \$40 00
Mammoth Size Bulbs	1 00	6 50 60 00
Monster Bulbs	1 15	7 50 70 00

NARCISSUS POETAZ

You can grow the lovely Poetaz Narcissus out-of-doors without danger—perfectly hardy. Flowers are the shape of Poeticus varieties, with free-flowering habits of the Polyanthus. Several flowers in a cluster on one stem. Excellent for forcing, as well as the garden.

Aspasia. Perianth pure white, with soft yellow eye; three or four flowers on a stem. A splendid variety for outdoor planting. \$1 per doz., \$7 per 100, \$65 per 1,000.

Narcissus Poetaz, continued

- Elvira.** A large flower of remarkable substance; perianth pure white with a yellow eye; three or four flowers on a stem. Splendid for pots, pans, or garden culture. \$1 per doz., \$7 per 100, \$65 per 1,000.
- Irene.** Yellow perianth, with deep golden yellow cup; broad flowers borne seven to eight on a stem; three stems to a bulb. \$1 per doz., \$7 per 100, \$65 per 1,000.
- Klondyke.** Perianth even tone of pure bright yellow, with golden yellow eye. Large and vigorous giving five to six flowers on a stem. \$1.10 per doz., \$7.50 per 100, \$70 per 1,000.
- Laurens Koster.** Perianth pure white, with delicate orange cup. Splendid for bedding. \$1.15 per doz., \$8 per 100, \$75 per 1,000.
- Profusion.** White perianth; small yellow cup; five to six flowers on a stem. \$1 per doz., \$7 per 100, \$65 per 1,000.

NARCISSUS POETICUS

Poet's or Pheasant-Eye Narcissus

Old-fashioned favorite type; all have snowy white flowers, with yellow or lemon cups margined more or less deeply with red and with rich, spicy odor. Do well in the open border, or naturalized in grass, are perfectly hardy, and once planted take care of themselves.

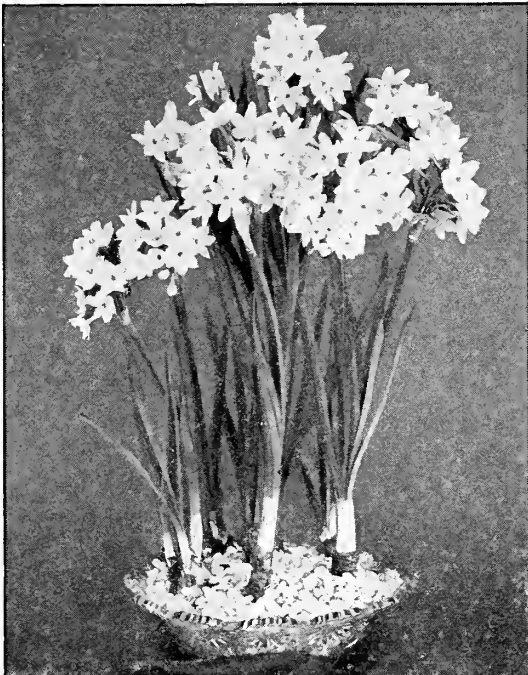
- Glory of Lisse.** Snow-white perianth of large size; cup yellow, margined red. A fine variety. \$1.10 per doz., \$7.50 per 100, \$70 per 1,000.
- Poeticus (Pheasant's Eye).** Flowers snow-white, with beautiful lemon-yellow cup edged with bright orange-red. 55 cts. per doz., \$3.75 per 100, \$32.50 per 1,000.
- Poeticus maximus (Improved Ornatus).** Giant flower. \$1.50 per doz., \$10 per 100, \$90 per 1,000.
- Poeticus ornatus.** More symmetrical than the old Poeticus, and blooms almost a month earlier; flowers large, pure white, cup margined with scarlet. Extra-large bulbs, 70 cts. per doz., \$4.50 per 100, \$40 per 1,000.
- Poeticus, King Edward VII.** Strong grower, producing large flowers of purest white, with yellow cup margined with scarlet. \$1 per doz., \$6.50 per 100, \$60 per 1,000.
- Poeticus poetarum.** Large, bold flowers; perianth pure white with entire crown crimson. 75 cts. per doz., \$5 per 100, \$45 per 1,000.

CHINESE SACRED NARCISSI

If to be sent by parcel post, add postage at your zone rate—one dozen bulbs weigh 5 pounds

Flowers in clusters very similar to those of the Paper-White Narcissus, but the cups within the petals are yellow. Planted in pots or bowls, in soil or in water with pebbles, they bloom in from six to eight weeks. Plant bulbs at intervals of ten days up to Christmas.

MAMMOTH BULBS. 20 cts. each, \$2.25 per doz., basket of 30 bulbs, \$5.



Paper-White Grandiflora Narcissi



Narcissus poeticus

JONQUILS

Much prized for their sweet-scented, small, golden yellow flowers; admirably adapted for winter flowering in soil. Perfectly hardy and easily naturalized.

- Campernelle Rugulosus.** Large, rich yellow flowers, borne very freely, and fine for cutting. 75 cts. per doz., \$5 per 100, \$45 per 1,000.
- Single Sweet-scented.** Rich buttery yellow; not as large a flower as the others, but most fragrant and very free-flowering. 65 cts. per doz., \$3.50 per 100, \$30 per 1,000.
- Double Sweet-scented.** Heads of small but very double deep golden yellow flowers. 75 cts. per doz., \$5 per 100, \$45 per 1,000.

POLYANTHUS NARCISSI

The flowers of this class of Narcissi are deliciously sweet-scented and are suitable for the window-garden and the conservatory. The bulbs are of the easiest culture and produce flowers very freely, on long stems bearing from six to a dozen blooms each. The pure white petals and gold cups of some varieties, in contrast with the yellow petals and orange cups of other sorts, are very beautiful.

	Doz.	100
GLORIOSA. Pure white, with orange cup; large truss.	\$1 00	\$6 50
GRAND MONARQUE. Pure white, with lemon cup; large flower and truss.	1 00	6 50
GRAND SOLEIL D'OR. Yellow, with orange cup; very free-blooming.	1 60	12 00
LORD CANNING. Clusters of large, golden yellow flowers with orange cups; extra fine.	1 00	6 50
MONT CENIS. Pure white, yellow cup; one of the finest forcing sorts.	1 00	6 50
WHITE PEARL. Large, pure satiny white; beautiful.	1 00	6 50

PAPER-WHITE GRANDIFLORA NARCISSI

This beautiful variety of the Polyanthus Narcissus is probably the most popular for indoor forcing. The beauty and grace of these flowers may be enjoyed throughout the winter months with surprisingly small outlay and effort. They force readily in soil, fiber, or in pebbles, and may be brought on in succession to bloom from Christmas to Easter. It is best to place the bulbs so that they almost touch each other in pots or bulb pans and then to store in a cool cellar or darkened place for about five weeks until thoroughly rooted; bring into the light gradually as needed. If potted about October 1 and brought into the light about the middle of November they will be in full bloom by Christmas.

	Doz.	100	1,000
First Size Bulbs	\$0 60	\$4 00	\$35 00
Mammoth Size Bulbs	75	5 00	45 00
Monster Bulbs	1 00	6 50	60 00

Failure to successfully force Hyacinth, Narcissi, or Tulip bulbs indoors is usually due to giving warmth and light before the roots have sufficiently developed.

HARDY LILIES (Lilium)

We recommend deep planting, say from 6 to 8 inches deep; varieties like *Speciosums* require at least 8 inches, with an ample amount of sand beneath the bulb to insure proper drainage. Cover the beds with leaves or litter during winter. The following varieties have proved to be sorts that may be planted in the fall or, with the exception of *Lilium candidum*, in the spring with excellent results.

Most Lily bulbs, being of late maturity, do not arrive in our country until October and November, which is conceded to be the best time to plant. Where the ground is liable to freeze before late Lilies arrive, it should be mulched with leaves or manure.

Auratum (Golden-banded Lily). Enormous, measuring frequently 8 to 12 inches across; pure white, spotted crimson, each petal marked in the center with a band of yellow. Flowers in August; delightfully fragrant.

	Each	Doz.	100
Mammoth Bulbs.....	\$0 50	\$5 25	\$37 50
Monster Bulbs.....	60	6 50	45 00

Speciosum album. The best late-flowering pure white hardy garden Lily; of easy culture.

	Each	Doz.	100
Mammoth Bulbs.....	\$0 50	\$5 25	\$37 50
Monster Bulbs.....	60	6 50	45 00

Speciosum Melpomene. White blooms heavily spotted and overlaid with crimson.

	Each	Doz.	100
Mammoth Bulbs.....	\$0 50	\$5 25	\$37 50
Monster Bulbs.....	60	6 50	45 00

Speciosum magnificum. An enormous flower; rich deep red, spotted crimson; flowers in August.

	Each	Doz.	100
Mammoth Bulbs.....	\$0 50	\$5 25	\$37 50
Monster Bulbs.....	60	6 50	45 00

Speciosum rubrum (*L. speciosum roseum*). A very popular variety. Rosy white, heavily spotted with rich crimson.

	Each	Doz.	100
Mammoth Bulbs.....	\$0 50	\$5 25	\$37 50
Monster Bulbs.....	60	6 50	45 00

Henryi. This beautiful and rare variety closely resembles the *Speciosum* type, and has been called the "Yellow *Speciosum*," the flowers being a rich apricot-yellow with a few brown spots. Grows 3 to 5 feet high. 75 cts. each, \$7.50 per doz.

Tigrinum splendens (Improved Tiger Lily). Bright, orange-red, spotted with black; very showy; 4 to 5 feet. 25 cts. each, \$2.75 per doz., \$20 per 100.

Tigrinum flore-pleno (Double Tiger Lily). Orange-red, spotted with black; double showy flowers. 30 cts. each, \$3 per doz., \$22.50 per 100.

LILIUM CANDIDUM (Madonna Lily)

This variety is sometimes called St. Joseph's, Madonna, or Annunciation Lily. One of the most popular and satisfactory of the American garden Lilies. Pure waxy white flowers produced on straight stems bearing anywhere from ten to thirty blooms of good size and substance; delightfully fragrant. Effective planting is the result of massing them in clumps or borders. Plant the bulbs as early as possible—September preferred.

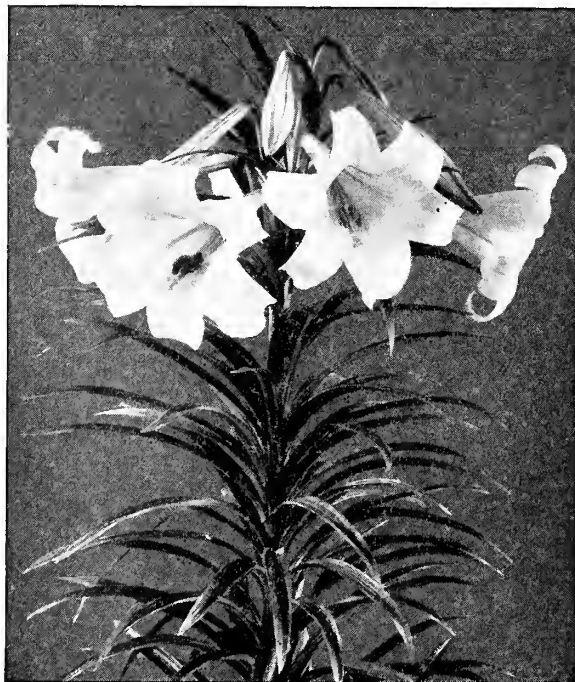
	Each	Doz.	100
Large Bulbs.....	\$0 25	\$2 50	\$17 50
Extra-Large Bulbs.....	35	3 50	25 00
Mammoth Bulbs.....	40	4 00	30 00



Lilium speciosum rubrum

LILIUM REGALE (L. myriophyllum)

This variety from western China is admittedly one of the most beautiful Lilies yet introduced. It grows 3 to 5 feet high, and blooms out-of-doors in July. It is perfectly hardy and flourishes under very varied conditions. The large, trumpet-shaped, delicately scented flowers, which are produced freely, are ivory-white shaded pink, tinged with canary-yellow at the base of the petals. It is also excellent for forcing. Strong-flowering bulbs, \$1 each, \$10 per doz.



Lilium Harrisii

LILIUM HARRISII

True Bermuda Easter Lily

This Lily is now so well known that it needs no description. It is undoubtedly one of the most popular flowers ever used for forcing. The bulbs we supply are of the highest quality obtainable and are perfectly true. Ready in August.

	Each	Doz.	100
Large Bulbs.....	\$0 50	\$5 00	\$37 50
Mammoth Bulbs.....	1 00	10 00	75 00
Monster Bulbs.....	1 75	20 00	

JAPANESE LILIES

For Greenhouse Forcing

We offer two varieties of Japanese Lilies which are largely grown for January to Easter flowering: *Lilium longiflorum formosum*, which usually arrives in this country in September, and *Lilium longiflorum giganteum*, which usually arrives in October or November.

Longiflorum formosum. Dark stems; blooms early. Often used instead of the Bermuda as an Easter Lily. Ready in September.

	Each	Doz.	100
Large Bulbs.....	\$0 50	\$5 00	\$37 50
Extra-Large Bulbs.....	75	7 50	57 50
Mammoth Bulbs.....	1 00	11 00	85 00
Monster Bulbs.....	1 50	15 00	

Longiflorum giganteum. Dark stems; later than the preceding; flowers of more substance. Ready in October or November.

	Each	Doz.	100
Large Bulbs.....	\$0 50	\$5 00	\$37 50
Extra-Large Bulbs.....	75	7 50	57 50

If Lily bulbs are wanted by parcel post add 20 cts. per dozen for postage

Miscellaneous Bulbs and Roots

AMARYLLIS

On receipt of the bulbs in the autumn they should be placed where they will always be slightly moist and warm, under the benches of a greenhouse, for example. Do not pot up the bulbs before the flower-buds appear; when first potted, give very little water, and promote growth by giving moderate bottom heat; increase the supply of water as the plants progress. Very often the mistake is made of potting up the bulbs too early; the consequence is that only leaf-growth is made.

VITTATA HYBRIDS. We believe this selection is the best obtainable at the present time, and we know of nothing that will give the amateur greater pleasure for the window-garden. They are of vigorous growth, free-flowering habit, and enormous size of the individual flowers. We offer mixed varieties only, in very strong bulbs (ready November 1). \$1 each, \$2.75 for 3, \$10 per doz.

CALLA LILIES

White (*Richardia zthiopica*). The White Calla, or Lily-of-the-Nile, is a well-known plant of easy culture, and in winter is one of our best window plants. To aid profuse blooming keep them dormant from the middle of June until the last of August; repot as soon as received in good, rich soil, using 6 to 8-inch pot; give water, light and heat in abundance, and the result will be most satisfactory.

	Each	Doz.	100
Medium-Size Roots	\$0 35	\$3 50	\$20 00
Mammoth Roots.....	45	4 50	30 00
Monster Roots.....	75	7 50	50 00

Godfrey Everblooming White. This is a great improvement over the ordinary White Calla especially for the amateur, being of even freer growth and much more floriferous over a longer season. The flowers, while a trifle smaller than the old-fashioned Calla, are of purer white.

	Each	Doz.	100
First-Size Roots	\$0 25	\$2 50	\$20 00
Mammoth Roots.....	35	3 75	27 50

Yellow, Elliottiana. The finest Yellow Calla; large rich, deep golden flowers often 4 to 5 inches across at the mouth; habit of growth and foliage like the old favorite White Calla excepting the leaves of Elliottiana are spotted with white.

	Each	Doz.	100
First-Size Roots.....	\$0 40	\$4 00	\$32 50
Mammoth Roots.....	50	5 00	40 00

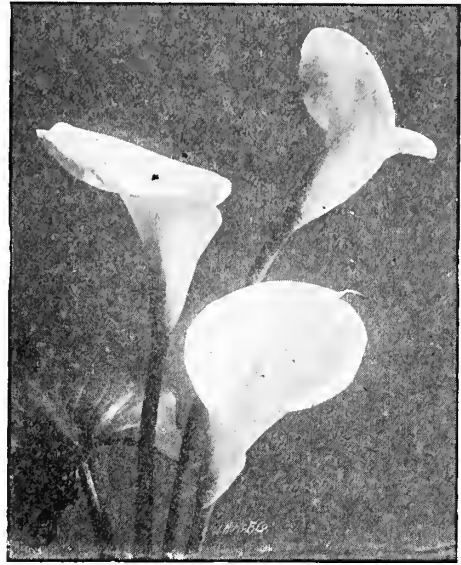
FANCY-LEAVED CALADIUMS

(Ready in January)

CHOICE NAMED VARIETIES. 40 cts. each, \$4 per doz., \$30 per 100.



Crocus Naturalized



White Calla Lilies

CHIONODOXA · Glory-of-the-Snow

The most beautiful of dwarf blue spring flowers, resembling those of *Scilla sibirica*, but larger, slightly taller, and more handsome. The Chionodoxa is very hardy, thriving in any ordinary garden soil, and in almost any situation. The bulbs continue to flower from year to year.

LUCILÆ. Bright sky-blue flowers, with large white centers. 60 cts. per doz., \$3.25 per 100, \$25 per 1,000.

SARDENSIS. Rich deep blue, with small white center. 65 cts. per doz., \$3.50 per 100, \$30 per 1,000.

GIGANTEA. Resembling *C. Lucilæ*, but with much larger blooms of soft gray-blue. 65 cts. per doz., \$3.50 per 100, \$30 per 1,000.

BEGONIAS, Tuberous-rooted

(Ready in January)

Splendid pot plants for the house or greenhouse, and especially valuable for bedding, flowering in the greatest profusion throughout the summer.

We can supply extra-size bulbs in the following colors:

SINGLE: Scarlet, Pink, Orange, Yellow, Salmon. Each color, \$4 per doz., \$30 per 100.

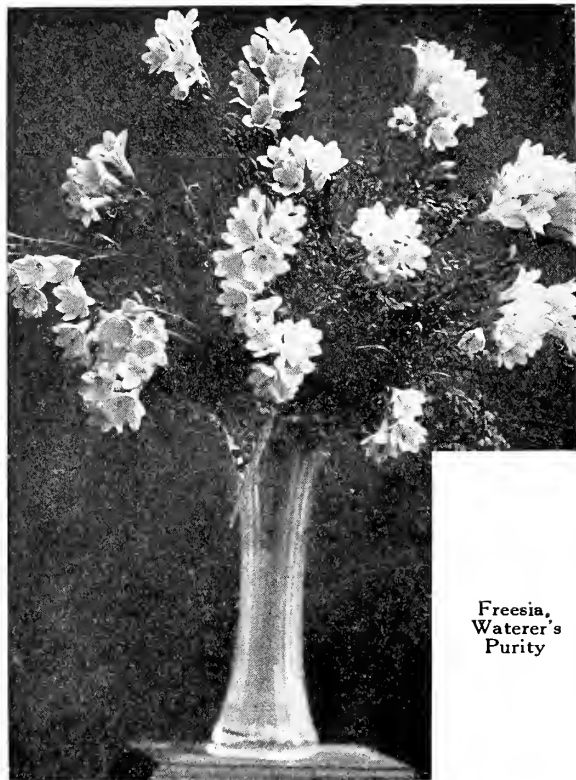
DOUBLE: Crimson, Scarlet, Rose, Salmon. Each color, \$4.50 per doz., \$35 per 100.

GIANT CROCUS

Mammoth-Flowering Named Varieties

These are large, selected bulbs of the best varieties and are noted for the immense size and quantity of their flowers and richness of color. The small, cheap bulbs we do not handle, as they fail to give satisfaction. Crocuses may be planted as an edging to beds, in careless patches in the grass, in masses among trees and shrubs, or on the slopes of terraces. In pots, planting twelve to fifteen bulbs in a 6 or 7-inch pan, they are very beautiful. Plant 2 inches deep and from 1 to 2 inches apart.

	Doz.	100	1,000
ALBION. Striped.....	\$0 35	\$2 00	\$16 00
BARON VON BRUNOW. Blue.....	35	2 00	16 00
DANDY. Dark purple, distinct white tips...	35	2 00	17 50
GOLDEN YELLOW. Mammoth bulbs.....	35	2 00	16 00
Jumbo bulbs.....	55	3 00	25 00
KING OF THE WHITES. Large; white....	35	2 00	16 00
MONT BLANC. White.....	35	2 00	16 00
PURPUREA GRANDIFLORA. Large; purple.....	35	2 00	16 00
SIR WALTER SCOTT. Striped.....	35	2 00	16 00
GIANT NAMED MIXED	30	1 75	15 00
FINE MIXED	20	1 00	8 00



Freesia,
Waterer's
Purity

FREESIAS

One of the most beautiful and popular flowers for house or conservatory. Very valuable for cutting, being peculiarly graceful and possessed of a sweet, delicate perfume. They force easily, and may be had in bloom by Christmas if desired.

WATERER'S PURITY. The flowers are of extra-large size and of a pure glistening white.

	Doz.	100	1,000
Mammoth Bulbs	\$0 60	\$4 00
Jumbo Bulbs	1 00	6 50
			60 00

GIANT-FLOWERING COLORED FREESIAS

These beautiful novelties are rapidly winning favor on account of their lovely and unique colorings. Very fragrant and free-flowering.

AURORA. A large-flowering yellow, suffused with orange. A variety which has many admirers. \$1 per doz., \$7.50 per 100.

CALIFORNIA. A large flower of a bright golden yellow; extra-strong, fine growth and long stems. One of the very finest yellow Freesias. \$1 per doz., \$7.50 per 100.

CARMENCITA. A beautiful light orange-salmon hue with buff shading on the lower petals; long, wiry stems. \$1 per doz., \$7.50 per 100.

CARRIE BUDAU. Lavender-pink; a great improvement over Gen. Pershing with larger flowers and heavier stems. An enormous grower and producer. \$1 per doz., \$7.50 per 100.

ILENA. Deep rosy lavender with white throat, deep orange blotch on lower petal; flowers large and very attractive; good stiff stems. \$1 per doz., \$7.50 per 100.

JUNE MICHELSEN. Large-flowering deep rose-pink, with light blush throat, three lower petals are veined purplish crimson, with a deep yellow blotch on center petal. Good stiff stems and strong constitution. A variety of special merit. \$1 per doz., \$7.50 per 100.

OLIVETTE. Bright carmine-red, with light yellow throat, lower petals having a deep yellow blotch with crimson veins. Very profuse bloomer. \$1 per doz., \$7.50 per 100.

YELLOW PRINCE. A fine clear yellow, very free-flowering variety; blooms large in size, borne on strong stems. \$1 per doz., \$7.50 per 100.

GLOXINIAS (Ready in January)

A most valuable pot plant for the house or greenhouse; in flower from June to August.

White, Purple, Scarlet. Each color, \$4.50 per doz., \$35 per 100.

ERANTHIS HYEMALIS

(Winter Aconite)

Early in spring the golden blossoms look charming, resting on an emerald-green cushion of leaves, and forming a striking contrast to the snowdrops, scillas, and chionodoxas. The foliage remains long after the flowers, making the plant especially valuable in moist situations, such as under trees, and where few other flowering plants will thrive. 5 to 8 inches high. 50 cts. per doz., \$3 per 100, \$25 per 1,000.

FRITILLARIA IMPERIALIS

(Crown Imperials)

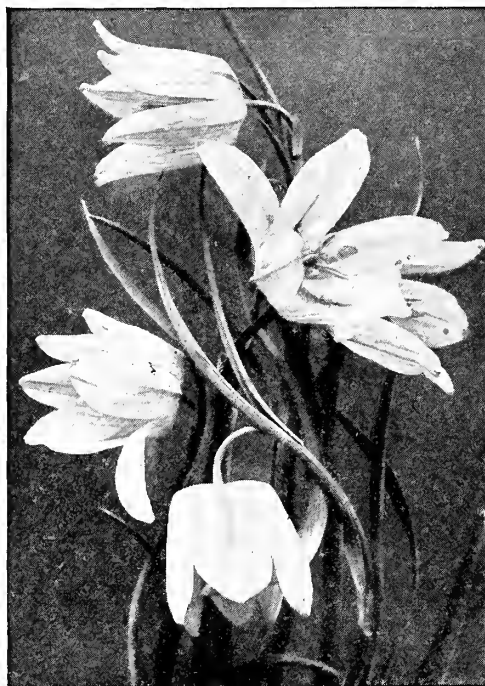
Well-known hardy border plants, bearing clusters of immense, pendent bell-shaped flowers, surmounted with a tuft of green leaves. They are excellent for hardy borders and may be left undisturbed for years.

	Each	Doz.	100
Red	\$0 35	\$3 00
Yellow	35	3 00
			20 00

FRITILLARIA MELEAGRIS

Dwarf, spring-flowering plant, bearing large, pendent bell-shaped flowers of various colors, in yellow, white, black, purple, striped and splashed and checkered in the most curious way. They are invaluable for pot culture, and exceedingly pretty when grown in large groups in the garden border or wild garden in a dry situation.

Mixed Colors. \$1 per doz., \$4.50 per 100, \$40 per 1,000.



Fritillaria Meleagris

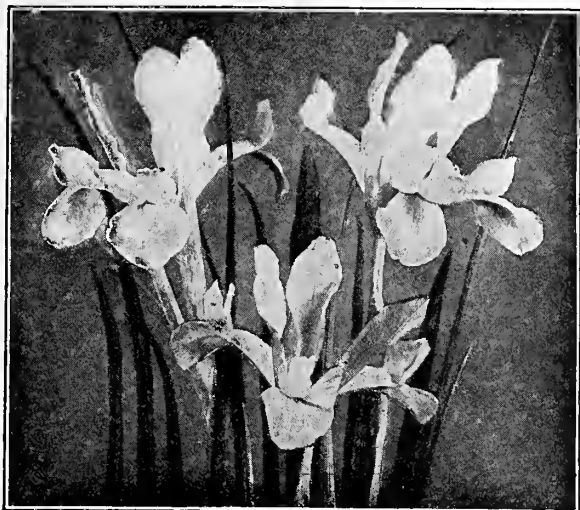
EARLY-FLOWERING GLADIOLI

These Gladioli are extensively used for winter forcing. They can be forced by the end of March, and come in very useful when most of the other bulbs have gone. Noted for their lasting qualities; every flower opens to the extremity of the spike.

BLUSHING BRIDE. One of the most beautiful; flowers are ivory-white, with deep crimson blotches on lower petals. .90 cts. per doz., \$6.50 per 100.

PEACH BLOSSOM. Splendid variety, producing graceful spikes of charming flowers, delicate rosy blush, blotched pale rose and cream. 90 cts. per doz., \$6.50 per 100.

SAPHO. Mauve, with slightly lighter flakes. 90 cts. per doz., \$6.50 per 100.



Spanish Iris

SPANISH IRIS (*Iris hispanica*)

These are extremely early and produce fragrant, orchid-like flowers of rich and beautiful colors. They are excellent for forcing, either in pans or in boxes for cutting. They are hardy out-of-doors, requiring only slight mulching in winter.

- BRITISH QUEEN.** Large, pure white.
- CAJANUS.** Rich golden yellow.
- EXCELSIOR.** Light blue, deep orange blotch.
- KING OF THE BLUES.** Deep dark blue, shaded lighter.
- QUEEN WILHELMINA.** Finest white.
- SOLFATARE.** Bright blue.
- THUNDERBOLT.** Darkest bronze; extra fine.

Price, any of the above Spanish Irises, 75 cts. per doz., \$5 per 100

IXIAS

The Ixia is a beautiful little winter-flowering bulb, with long, slender, graceful spikes of bloom. The colors are rich, varied, and beautiful, the center always differing in color from the other parts of the flower, so that the blossoms, expanding in the sun's rays, present a picture of gorgeous beauty. Very desirable for pots. We offer them in mixture at 45 cts. per doz., \$2.75 per 100, \$25 per 1,000.

LILY-OF-THE-VALLEY

Waterer's "XXX Perfection Brand"

The earliest, largest, and best for forcing. Strong pips.

\$1 per doz., \$7 per 100, \$60 per 1,000

If wanted by parcel post, add 10c. per doz., 25c. per 100, for postage

CLUMPS. Ready in November. For outdoor planting only. 60 cts. per clump, \$6 per doz., \$45 per 100.

Cold Storage Lily-of-the-Valley

We offer an extra-fine grade of these, which we carry in cold storage for forcing for immediate delivery. Case of 250, \$18; 500, \$35; 1,000, \$65.

OXALIS

Charming little half-trailing or bushy plants particularly adapted for pot-culture and hanging-baskets. The foliage alone is very attractive and when in flower they are exceedingly pretty.

- BUTTERCUP.** Large, rich yellow flowers.
- GRAND DUCHESS.** A variety of great beauty; of dwarf, sturdy growth, throwing their large flowers well above the foliage. Extremely free-flowering. One of the most desirable for window culture. We offer them in three colors, **Pink, White, and Lavender.**

Price, any of the above, 50 cts. per doz., \$3 per 100

SCILLAS

Blue Bells and Wood Hyacinths



SIBIRICA. Most beautiful hardy spring bulbs, producing in profusion masses of exquisite rich blue flowers almost before the snow has disappeared. If grown with snowdrops and crocuses, for contrast, the effect is magnificent. Grown in pots they may be had in bloom from Christmas until April. Top-size Bulbs, 85 cts. per doz., \$5 per 100, \$40 per 1,000.

CAMPANULATA (Wood Hyacinth). Flowers borne on tall spikes, 1 to 2 feet high. Each flower measures nearly an inch across and droops gracefully; perfectly hardy; also fine for pot culture. We offer the following colors:

	Doz.	100	1,000
White	\$0 60	\$3 50	\$32 50
Blue	60	3 50	32 50
Pink	60	3 75	35 00

SNOWDROPS

These elegant little flowers, the first to open in spring, should be found in every garden. The Snowdrop thrives in almost any situation or soil, and should be planted as early in the autumn as possible. A combination of crocuses, scillas, and Snowdrops make a glorious effect when planted promiscuously in a border, one following the other in flowering and in change of color.

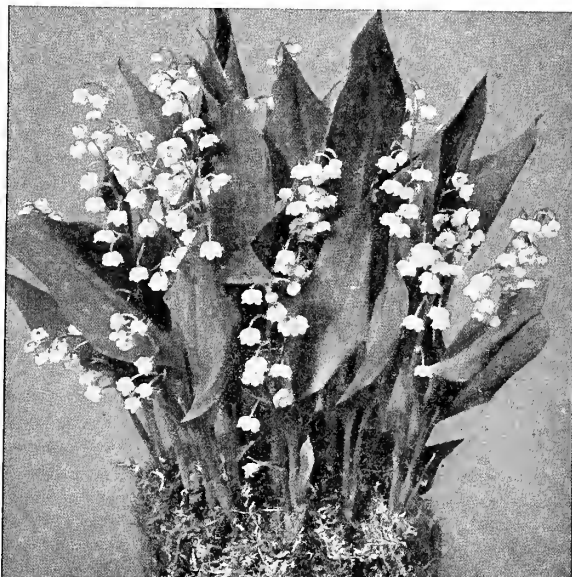
	Doz.	100	1,000
Single	\$0 60	\$3 75	\$30 00
Double	80	5 50	50 00

SPIRÆA

November Delivery

This beautiful pot plant, usually grown by the florist for Easter, we are able to offer in five named varieties, in clumps suitable for growing in 6-inch pots.

- GLADSTONE.** Large spikes of pure white flowers, borne on strong stems 18 inches high.
 - PEACH BLOSSOM.** A very lovely shade of peach-blossom pink. A very free-flowering variety.
 - PRINCESS MARY.** One of the very best of the dark pinks.
 - QUEEN ALEXANDRA.** A popular variety on the order of Gladstone, but of a pale pink color.
 - RUBENS.** Deep carmine-rose; very strong grower.
- Strong clumps of any of the above 5 varieties, \$1 each, \$10 per doz., \$75 per 100



Lily-of-the-Valley

PREPARED BULB FIBER

Splendid material to use instead of soil to grow bulbs in. Clean and odorless. Just the thing to use for all house plants. 50 cts. per 1/2 peck, 75 cts. per peck, \$2.50 per bushel. If wanted by parcel post, add postage.

PEBBLES

Carefully screened and selected for growing bulbs in water. Qt. 10 cts., 4 qts. 40 cts., pk. 75 cts. Cannot be sent by mail.

Waterer's Choice Flower Seeds for the Greenhouse

(For Complete List of Flower Seeds, See Our General Catalogue)

Antirrhinum · Snapdragon. See page 17

Calendula · Pot Marigold

Valuable for pot culture, blooming in the winter and early spring, 1 foot high.

Ball's Orange. A special forcing strain. Large extra-double bright orange flowers.....	Pkt. \$0 25	Large Pkt. \$0 75	Oz.
Lemon Queen. Lemon-yellow.....	10	20	\$0 40
Meteor. Yellow, striped orange.....	10	20	40
Orange King. Dark orange-red.....	10	20	40
Prince of Orange. Orange, slightly striped with yellow.....	10	20	40

Cineraria

Our strains of this showy greenhouse plant are of acknowledged superiority, the very choicest from a prize European collection containing only the best colors.

Waterer's Prize Dwarf. Dwarf, compact plants not over a foot high, with immense heads of large individual flowers in a great range of beautiful colors.....	Pkt. \$0 50
Waterer's Prize Tall. Extra-fine colors, with plenty of selfs and various shades of rose.....	50
Matchless. Very fine strain; contains many new colors; vigorous and compact growth.....	75
Matador. Fine glowing scarlet.....	50
Hybrida grandiflora, Stella. Twisted or fluted petals like a single cactus dahlia.....	50
Stellata, Feltham Beauty. A great improvement on the old variety. Beautiful mixture of many colors.....	50

Clarkia elegans

Clarkias have become very popular of late and are grown extensively in the greenhouse during the winter. 2 to 2½ feet.

Double Brilliant. Rich crimson-scarlet.....	Pkt. \$0 10	Large Pkt. \$0 25
Double Salmon Queen. Salmon-pink.....	10	25
Double Scarlet Queen. Brilliant orange-scarlet.....	10	25
Double White. Pure white.....	10	25

Cyclamen

Giganteum (grandiflorum). The very choicest strain of this beautiful flower obtainable.

	Pkt. 100 Seeds	
Blood-Red.	\$0 50	\$2 50
Bright Rose.	50	2 50
Salmon King. Salmon-pink. Very fine.....	50	2 50
Vulcan. Deepest red.....	50	2 50
White, with Dark Eye.	50	2 50
White Swan. Pure white.....	50	2 50
Finest Mixed.	40	2 00
Butterfly (Papilio or Victoria). Very large flowers with fringed and fluted petals.....	50	
Cherry Ripe. The brightest red Cyclamen in cultivation.....	75	
Mrs. Buckston. A real salmon shade—a lovely tint.....	75	
Pink Pearl. A lovely pale salmon.....	75	

Gloxinia

Hybrida grandiflora. An unsurpassed strain, containing the spotted hybrids as well as the finest self-colored sorts.....

Primula Chinensis · Chinese Primrose

One of our finest winter free-flowering house plants. Our strains may be relied on as being of the finest procurable.

Alba magnifica. Pure white, with yellow eye. One of the finest.....	Pkt. \$0 50
Chiswick Red. Rich deep rose.....	50
Crimson King. The deepest and richest crimson-scarlet color in Primulas.....	50
Duchess. Pure white, with large bright carmine center.....	50
Holborne Blue. A beautiful shade.....	50
Orange King. Orange-salmon, shaded with terra cotta. Very beautiful.....	50
Excelsior Mixed. A magnificent strain of Giant Primula.....	50
Stellata. Large heads of star-shaped flowers of various colors.....	50

Primula obconica

Gigantea Kermesina. Rich crimson.....	25
Gigantea cœrulea. Blue.....	25
Gigantea, Eureka. Rich, rosy carmine, with clear yellow eye.....	25
Gigantea rosea. Pure rose color.....	25
Gigantea, Mixed. All colors.....	25

Primula obconica, continued

Grandiflora alba. Pure white.....	Pkt. \$0 25
Grandiflora Kermesina. Bright crimson.....	25
Grandiflora rosea. Beautiful clear rose.....	25
Grandiflora, Mixed. All colors.....	25

Various Primulas

Kewensis. The flowers are a bright yellow in color and fragrant.....	25
Malacoides superba. New improved variety, of a deep rosy pink color.....	25
Malacoides. Light lilac, branching habit.....	25
Malacoides alba. Pure white.....	25
Malacoides, Double. (New.) Deep, rosy pink.....	25
Malacoides fimbriata. (New.) The flowers, of a lovely pink hue, are beautifully and delicately fringed.....	35
Malacoides, Pink Beauty. A new and very remarkable variety, with large flowers of a beautiful rosy pink, almost shading to mauve.....	35

Schizanthus · Butterfly Flower

Free-flowering and very attractive annuals for the garden in summer or the greenhouse during winter.

Wisetonensis. The colors range from soft pink to dark brown.....	Pkt. \$0 25
Wisetonensis, Excelsior. This may be described as a much larger flowering strain of Wisetonensis.....	50
Wisetonensis, Pink Pearl. Glistening white, with rosy pink margin to petals.....	50
Garraway's Hybrids. A magnificent strain for greenhouse and conservatory decoration, embracing a wide range of beautiful colors.....	25

Mammoth-flowering Beauty Stocks

Particularly adapted for the greenhouse, to provide cut flowers during the winter.

Abundance. Carmine-rose.....	Pkt. \$0 15
Beauty of Nice. Delicate flesh-pink.....	15
Bright Violet. Violet-blue.....	15
Crimson King. Brilliant crimson.....	15
Empress Elizabeth. Bright carmine.....	15
Monte Carlo. Canary-yellow.....	15
Queen Alexandra. Soft rosy lilac.....	15
Deep Lilac.	15
White Lady. Snow-white; very double.....	15

Sweet Peas, Early Spencer. See page 21



Calendulas

Waterer's Choice Flower Seeds

FOR AUTUMN AND EARLY WINTER SOWING

(For Complete List of Flower Seeds, see Our General Catalogue)

Splendid results can be obtained by sowing the following varieties of Flower Seeds in the fall. Sown in a coldframe or a protected corner of the garden, you can have an abundant supply of early-blooming flowers the following spring, as the plants from autumn-sown seed become larger and more robust, flowering earlier and more numerously than if sown in the spring.



Philadelphia Pink Antirrhinum

Antirrhinum Snapdragon

Tall, large-flowered varieties; valuable for cutting; grows about 3 feet in height.

	Large Pkt.	Pkt.
Giant Garnet.....	\$0 10	\$0 30
Giant Pink.....	10	30
Giant Rose.....	10	30
Giant Scarlet.....	10	30
Giant White.....	10	30
Giant Yellow.....	10	30
Giant Mixed.....	10	30
Pink Beauty. Deep rose-pink self, enormous blossoms.....	35	

Aquilegia · Columbine

Hardy perennial of great beauty. The long-spurred type gives elegant cut-flowers. If sown in summer, plants will be ready by autumn for transplanting to the border to flower next May and June.



Long-spurred Hybrids. This strain includes shades of blue, mauve, lavender, pink, scarlet, orange, yellow, and white, of the large-flowered and long-spurred forms. \$0 10 \$0 60

Cærulea. One of the finest varieties, pale blue and white flowers. Height, 2 feet. 10 60

Chrysantha. Golden yellow. Height, 2 feet. 10 60

Californica hybrida. Large yellow flowers; dark orange spurs. 10 60

Rose Queen. Deep rose. 15 75

Skinneri. Large scarlet and yellow flowers; long spurs. 15 75

Double Mixed 10 25

Single Mixed 10 25

Hardy Perennial Asters · Michaelmas Daisies

Single-flowering, hardy herbaceous plants, thriving in any good garden soil.

	Pkt.	Large Pkt.
Large-flowered, Mixed.....	\$0 10	\$0 30

Bellis · English Daisy

	Pkt.	Large Pkt.
The Bride. A fine, very double, free-flowering, pure white.....	\$0 10	\$0 60
Longfellow. Large, double pink flowers.....	10	60
Snowball. Large and very double; pure white.....	10	60
Giant Red. Beautiful and densely double flowers.....	25	75
Giant Rose. Bright rose.....	25	75
Giant White. Pure white.....	25	75
Double Mixed. Selected strain of the finest quality....	10	50

Achillea

Ptarmica, The Pearl (Double White Yarrow). One of the best hardy perennials; bears a profusion of small, double, white flowers during the entire season. Fine for cutting. Height, 2½ feet. \$0 25

Aconitum

Hardy perennial plant, with showy panicles of helmet-shaped flowers; does well in shady places or under trees. Height 4 feet. **Napellus** (Monkshood). Blue. 10

Agrostemma

Coronaria (Rose of Heaven; Mullein Pink). Hardy perennial, with silvery white leaves and red flowers, borne on long slender stems; fine for cutting. Height, 2 feet. ¼oz. 20 cts. 10

Coronaria alba. A pure white variety. 10

Alyssum

Saxatile compactum. A pretty Alyssum for rock-gardens and for borders in perennial beds. The plants are 9 inches in height and spread freely, and produce masses of bright yellow flowers in early spring. ¼oz. 35 cts. 10

Anchusa

Italica, Dropmore. A lovely blue perennial, sometimes called the "Summer Forget-me-not." It blooms during May and June, and the large forget-me-not-like flowers of deep gentian-blue are produced in loose clusters on long spikes. Height, 4 feet. ¼oz. 50 cts. 15

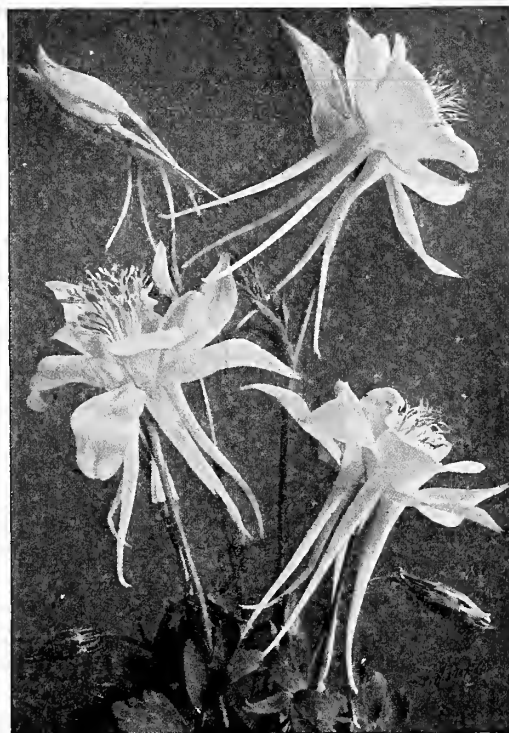
Anemone · Windflower

Very pleasing hardy plants for the herbaceous border. Fine large flowers. Excellent for bouquets and table decoration. **Coronaria.** Mixed Colors. 10

St. Brigid. A beautiful selection, comprising semi-double and double flowers. 15

Arabis · Rock Cress

Alpina. Early spring-flowering plants especially adapted for edging and rockery; plants form a dense carpet completely covered with pure white blossoms; perennial; May. Height, 6 inches. ¼oz. 35 cts. 10



Long-spurred Aquilegia



Delphinium, Gold Medal Hybrids

Campanula · Bellflower

Biennial Varieties

Sow these hardy biennials in summer and transplant to a bed in autumn for flowering the following year. They also make effective pot plants for spring flowering, if sown in summer, potted in autumn, and kept in a cool frame through winter.

Medium calycanthema (Cup-and-Saucer Canterbury Bells). This is the finest type of this old-fashioned and much-prized garden plant.

	Pkt.	Large pkt.
Rose. Delicate rose-pink	\$0 10	\$0 50
Blue. A fine, clear shade	10	50
White. Pure white	10	50
Mixed	10	40

Single Varieties

Rose	White	Blue	Mixed
Pkt. 10 cts.; large pkt. 25 cts.			
Double Mixed. Pkt. 10 cts.; large pkt. 40 cts.			

Perennial Varieties

Bell-shaped flowers, well known and easily grown; useful for flower border, shrubbery, or wild garden.

Carpatica (Carpathan Harebell). Free-flowering, continuing in bloom the whole season; blue. Height, 6 inches.	Pkt. \$0 10
Carpatica alba . The white-flowered form of the above.	10
Persicifolia grandiflora (Peachbells). One of the finest of the hardy Bellflowers; grows 2 to 3 feet high, with large blue flowers.	15
Persicifolia alba . White-flowered Peachbell.	15
Persicifolia Pfitzeri . Light blue.	25
Pyramidalis (The Chimney Bellflower). A beautiful, stately plant for garden or pot culture; blue flowers.	10
Pyramidalis alba . White flowers.	10

Hardy Candytuft · Iberis

Iberis sempervirens . A profuse white-blooming hardy perennial, coming in flower early in the spring; much used for rockeries, etc.	Pkt. \$0 15
Iberis gibraltaria . Lilac flowers, shading white; very fine.	15

Perennial Chrysanthemums

Shasta Daisy . A perennial variety with large white flowers on long stalks. When sown very early under protection the flowers often appear before summer is over.	15
King Edward VII . Single. A splendid large-flowered variety. The flowers are pure white, and borne on long stiff stalks well above the foliage.	15

Coreopsis

Lanceolata grandiflora . Yields a profuse and long-continued succession of large, golden yellow flowers during the whole of the summer months. Hardy perennial.	1/4 oz. 25 cts.	10
--	-----------------	----

Delphinium · Perennial Larkspur

One of the most showy and useful hardy perennial plants, producing splendid spikes of flowers in profusion throughout the summer.

Gold Medal Hybrids . Mixed, choicest, all shades of blue from best-named varieties only.	Pkt. 1/4 oz. 60 cts.	\$0 15
Belladonna . Clear turquoise-blue.		25
Belladonna, Cliveden Beauty . A great improvement on original variety.		25
Belladonna, Fanny Stormouth . Light azure-blue; very large.		25
Cardinale . Bright scarlet, with yellow center.		25
Chinense . A distinct and neat variety, growing about 1 1/2 feet high, with fine feathery foliage, and producing freely spikes of large blossoms of intense gentian-blue.		10
Chinense album . The white-flowered form of the preceding.		10
Formosum . Splendid dark blue flowers with a white center.		10
Formosum coelestinum . Very beautiful, large, pale blue flowers with white center.		15
Elatum hybridum fl.-pl. Double varieties; finest mixed.		15
Rev. E. Lascelles . (New.) Flowers large and double, deep blue with white center.		25

Dianthus · Hardy Garden Pinks

These form low, bushy, tufted plants, above which are produced on long stems the beautiful fringed and fragrant flowers so valued in "old-fashioned" gardens.

Plumarius, Single Mixed (Pheasant's Eye Pink). Large, single, fringed flowers, beautifully marked in many colors.	Pkt. \$0 10
Plumarius fl.-pl. (Double Hardy Garden Pinks). Double and semi-double varieties in beautiful colors.	15
Semperflorens (Everblooming Hardy Garden Pinks). Very beautiful, sweet-scented, double, semi-double, and single flowers in great diversity of color.	25
Latifolius atrococcineus fl.-pl. A hybrid between the China Pink and Sweet William. The heads of brilliant red flowers are quite double.	15

Digitalis · Foxglove

Showy, hardy perennials of easy culture. As a background in a shrubbery, or as specimen plants in large beds, they are equally striking and effective. Sow in July for strong flowering plants the following season.

Spotted Varieties . A superb mixture, containing a wonderful range of colors.	Pkt. \$0 10
Monstroza . Long spikes, surmounted by one enormous flower, all colors mixed.	10
Gloxiniæflora . Large, spotted, gloxinia-like flowers, produced on long spikes. Purple, White, Rose, and Mixed.	Each, 10

Gaillardia (Perennial Varieties)

Showy and handsome hardy perennials, for beds and borders. The flowers are a most peculiar combination of shades, varying between gold and maroon. Sow in summer in drills, transplanting to permanent positions during autumn.

Grandiflora . Flowers maroon and orange, 3 to 4 inches across. Height, 2 feet.	Pkt. \$0 10
Grandiflora compacta . Compact variety, as rich and varied as the tall-growing sort.	15
Grandiflora, Dazzler . Bright golden yellow, with rich maroon-red center, the two tints bearing a well-balanced and harmonious proportion to each other.	25
Grandiflora, The King . Vivid crimson center, wide yellow margin.	25



Lupinus polyphyllus

Gypsophila · Baby's Breath

- Paniculata.** White flowers, fine for bouquets; one of the favorite hardy perennials; blooms first year if sown early. Pkt. Height, 2 feet. 1/4 oz. 25 cts. \$0 10
- Paniculata fl.-pl.** The double-flowering Baby's Breath. One of the finest hardy plants for cutting. 25
- Snow White.** Double; pure white. 35

Hollyhock

A hardy perennial of upright, stately growth, 5 to 8 feet high. The very double varieties are the most desirable, but the newer, semi-double, fringed types are also very popular. Hollyhocks make a fine row in a garden, or a fine background next to a building or high wall or fence.

- | | | |
|--|--------|------------|
| | Pkt. | Large Pkt. |
| Chater's Double White. | \$0 10 | \$0 40 |
| Chater's Double Scarlet. | 10 | 40 |
| Chater's Double Sulphur-Yellow. | 10 | 40 |
| Chater's Double Bright Rose. | 10 | 40 |
| Chater's Double Salmon-Rose. | 10 | 40 |
| Chater's Double Maroon. | 10 | 40 |
| Chater's Finest Mixed. | 10 | 40 |
| Double Pink Queen. Very pretty salmon-pink; full double flowers. | 25 | |
| Double Newport Pink. Pure pink flowers; very double. | 10 | 40 |
| Mammoth Fringed, Allegheny. Petals beautifully laced and fringed, very robust habit and enormous flowers measuring 5 inches across, splendid rich colors, choicest mixed. | 10 | 40 |
| Single Mixed. Fine and showy. | 10 | 30 |
| Imported Collection. Twelve colors, \$1. | | |

Lathyrus latifolius

Everlasting or Hardy Sweet Pea

A hardy perennial climber, flowering the first year if seed is sown in the fall. Flowers resemble sweet peas. Is not fragrant, but is hardy and showy, and thrives in any good soil. Height 6 feet.

- | | |
|---|--------|
| White Pearl. Long spikes of white flowers. | \$0 15 |
| Pink Beauty. Rosy pink. | 10 |
| Mixed. All colors. | 10 |

Lupinus (Perennial Varieties)

Hardy perennials, succeeding in any good garden soil; blooms in May and June. Height 3 feet.

- | | |
|--|--------|
| Polyphyllus. Blue. | \$0 10 |
| Polyphyllus albus. White. | 10 |
| Polyphyllus roseus. Rosy pink flowers. | 10 |
| Moerheimi. Flowers rose and white, blooms nearly the whole of the summer. Habit rather dwarf. | 15 |
| Perennial Mixed. | 10 |

Lychnis

Handsome hardy perennial plants of easy culture, for massing in beds and borders; blooming the first year, if sown early.

- | | |
|--|-------------|
| Arkwrightii. (New.) Effective colors. | Pkt. \$0 35 |
| Chalcedonica. Fine scarlet flowers. Height, 2 feet. | 10 |
| Chalcedonica, Salmon Queen. Very pretty salmon-pink. | 10 |
| Haageana. Brilliant orange, scarlet, crimson, etc., in mixture. Height, 1 foot. | 15 |

Myosotis · Forget-me-not

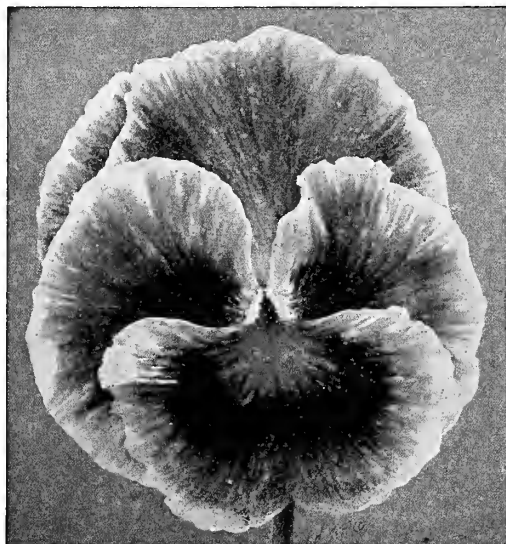
Most of the Forget-me-nots will bloom the first year from seed if sown early. If sown in July or August in shaded frames, fine plants will be obtained for spring blooming.

- | | |
|---|--------|
| Alpestris, Victoria. Of dwarf, compact growth, with long Pkt. sprays of bright blue flowers, produced in dense umbels. Height, 6 inches. | \$0 10 |
| Dissitiflora. Very free-blooming, large-flowering; compact habit. | 15 |
| Palustris (True Forget-me-not). Dark blue. | 10 |
| Palustris semperflorens. Very dwarf; blooming from spring until autumn. | 15 |
| Eliza Fonrobert (M. robusta grandiflora). Large-flowering, bright blue. | 10 |
| Royal Blue. Flowers are of larger size and a deeper blue than any other; unexcelled for pot culture. | 10 |
| Oblongata perfecta. Flowers borne on long stems; very suitable for winter flowering. | 15 |

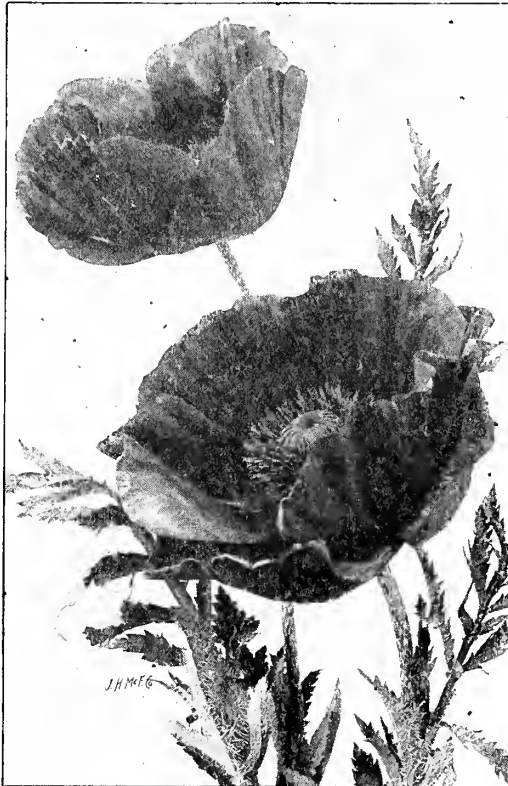
Pansy

WATERER'S EXHIBITION PRIZE, MIXED. This is a superb mixture of the largest and best types in an immense variety of brilliant colors. Pkt. 50 cts., 1/8 oz. \$1, 1/4 oz. \$3, oz. \$10.

- | | | |
|---|-------------|-------------------|
| Cassier's Large-flowered Blotched. Very fine large-flowered mixed. | Pkt. \$0 25 | Large Pkt. \$0 75 |
| Odiar's Five-spotted. Extra choice. We can strongly recommend this strain. | 25 | 75 |
| Triumph of the Giants. Plants of robust growth with large flowers, mostly curled; rich variety of color. | 25 | 75 |
| English Show. Extra-fine strain; splendid variety of color with good form. | 25 | 75 |
| Masterpiece. Very fine blooms, beautifully blotched; very rich colors. | 25 | 75 |
| English Prize. Seed saved from the finest collection of prize plants. | 50 | 1 00 |
| Giant Prize, Light Blue. Ultramarine-blue with violet eye. | 15 | 50 |
| Giant Prize, Golden Queen. Bright golden yellow, marked in the center with a few dark stripes. | 15 | 50 |
| Giant Prize, Golden Yellow. Bright golden yellow, with large brown eyes. | 15 | 50 |
| Giant Prize, Dark Blue. Rich dark blue; large, fine. | 15 | 50 |
| Giant Prize, Lord Beaconsfield. Deep violet, shading to white on the upper petals. | 15 | 50 |
| Giant Prize, Snow Queen. Satin-white, center slightly tinged with yellow. | 15 | 50 |
| Giant Prize, White. White flowers with dark eye. | 15 | 50 |
| Parisian Large Stained. Very showy strain of Trimardeau, fine large flowers. | 15 | 50 |
| Choice Mixed. Extra fine; great variety. | 10 | 25 |



Exhibition Prize Pansy



Oriental Poppies

Hardy Perennial Poppies

There are no flowers more ornamental and useful in our gardens than the various varieties of hardy Poppies. Once started they increase in size and beauty each succeeding season.

Perennial Poppies may be sown from June to August, to bloom the following summer.

- Oriente** (Oriental Poppy). The beautiful dark brilliant scar- Pkt.
let hardy Poppy \$0 10
- Oriente Hybrid**. These Hybrids contain many new colors,
including white, blood-red, salmon, glowing scarlet, etc.; very
fine..... 15
- Oriente, Excelsior**. A very fine mixture, ranging from deli- 25
cate salmon to deep crimson..... 15
- Oriente Hybrid, Mrs. Perry**. Orange-apricot, very fine..... 15
- Oriente Hybrid, Princess Victoria Louise**. Bright salmon-
scarlet..... 15
- Iceland** (*Papaver nudicaule*). They grow about a foot high, and
are covered with masses of bright, satin-like flowers. Finest
mixed..... 10



Sweet Williams

Hardy Primroses

These are among the best of the early spring-blooming plants. With slight protection they will stand the winter, but will do better if protected by a coldframe.

- Auricula**. A well-known variety of great beauty; brilliant- Pkt.
colored flowers in umbels, ranging in colors of maroon, purple,
crimson, and yellow. Choice mixed from prize flowers..... \$0 25
- Polyanthus** (*Primula elatior*). The colors range from white to
deep maroon; the yellow, rose, and crimson shades being par- 25
ticularly fine. Height, 9 inches. Finest mixed.....
- Japonica Mixed**. One of the finest Primroses for the garden,
producing several whorls of large flowers, on erect stems,
varying from white to crimson. Height, 1½ feet..... 15
- Vulgaris** (English Primrose). Flowers fragrant, canary-yellow
color..... 15



Hardy Primroses

Pyrethrum

Hardy perennials, bearing single and double aster-like flowers on long stalks; excellent for cutting. Height 2 feet. Pkt.

- Hybridum grandiflorum**. Large-flowering single mixed..... \$0 15
- Hybridum flore-pleno**. Finest double hybrids. Seed saved
from the finest collection..... 25

Scabiosa (Perennial)

- Caucasica**. A beautiful perennial variety with large pale blue Pkt.
flowers on long stems; valuable for cutting. Height 3 feet.. \$0 25
- Japonica**. Beautiful lavender-blue flowers. Height 2½ feet.. 15

Stokesia · Cornflower Aster

- Cyanea**. A beautiful hardy perennial. Lavender-blue, corn-
flower-like blossoms. Blooms from July to frost. Indispens- 15
sable for cuttings. Height 2 feet.....

Statice · Sea Lavender

Splendid hardy perennials, either for the border or rockery, pro-
ducing all summer panicles of minute flowers, which can be dried and
used for winter bouquets. Pkt.

- Mixed..... \$0 10

Sweet William · Dianthus barbatus

A well-known, free-flowering hardy perennial, bearing heads of
fragrant, richly colored flowers.

- Pink Beauty** (*Newport Pink*). A beautiful shade of salmon- Pkt.
pink; very large heads on long stems..... \$0 15
- Scarlet Beauty**. Large heads of an intense scarlet color; very
striking..... 15
- Holborn Glory**. Giant-flowering varieties in finest assortment
of colors..... ¼oz. 25 cts... 10
- Single White**..... ¼oz. 25 cts... 10
- Single Mixed**..... ¼oz. 25 cts... 10
- Double Mixed**. Special strain..... ¼oz. 30 cts... 10
- Imported Collection**. Six varieties, 50 cts.

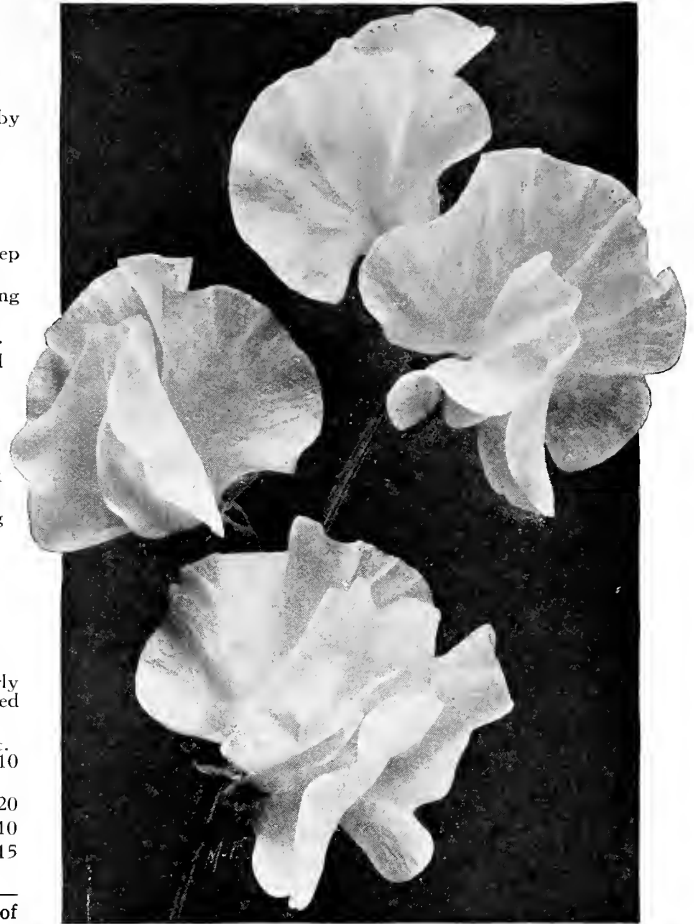
Sweet Peas

Early Long-flowering Spencer

These varieties, if sown early in fall under glass, will bloom by Christmas and continue all winter.

Price, any of the following, pkt. 15 cts., 1/2oz. 60 cts., oz. \$1

- Aviator.** Rich live crimson-scarlet.
- Bluebird.** A splendid rich, deep blue.
- Glitters.** The standard is a bright fiery orange, and the wings are deep orange.
- Heather Bell.** The color is a rich but pleasing mauve, but after standing in water becomes a beautiful mauve-lavender.
- Lavender King.** This variety is a rich, true, deep lavender throughout.
- Melody.** Rosy pink on white ground; long stems; flowers large and well waved.
- Mrs. A. A. Skach.** Shell-pink; beautifully waved.
- Pink and White, Early.** Giant pink and white.
- Rose Queen.** A beautiful shade of rose-pink.
- Snow Flake.** Pure white. The blossoms are very large and of the best waved Spencer form.
- Song Bird.** Pale pink on white ground; the flowers are borne on long stems in threes and fours.
- Spring Maid.** Light pink on a cream ground.
- Yarrowa.** Bright rose-pink; wings light pink; large and free bloomer.



Spencer Sweet Peas

Wallflower

Well-known deliciously fragrant half-hardy perennials, blooming early in the spring, with spikes of beautiful flowers. They should be protected in a coldframe in the winter and planted out in April.

- Early Paris Market.** This variety, if sown in March, will bloom in Pkt. July..... \$0 10
- Bronze King.** Flowers reddish bronze, very early, suitable only for growing indoors, for winter blooming..... 20
- Single Mixed.** All colors..... 1/4oz. 20 cts.... 10
- Double Finest Mixed.**..... 15
- Imported Collection of Single Wallflowers.** Eight colors, 60 cts.

Refer to our General Spring Catalogue for a complete list of Flower and Vegetable Seeds.

Pot-Grown Strawberry Plants For Delivery in August and September

All the varieties offered are perfect flowering, requiring no pollenization

Price, any of the following, except where noted, \$1.25 per doz., \$7 per 100, \$60 per 1,000

- Brandywine.** Its great productiveness, large size, beauty of form and color, firmness and high quality make it a desirable variety for any purpose. Late.
- Campbell's Early.** An extra-early variety of great merit—a very vigorous grower, producing great crops of large, rich, red berries.
- Chesapeake.** The fruit is of large size, deep red in color and of a rich aromatic flavor. One of the best late varieties. \$1.35 per doz., \$8 per 100.

- Early Jersey Giant.** Brilliant crimson in color, and exceptionally firm. Colors all over at once and has a rich, wild Strawberry flavor. Early. \$1.35 per doz., \$8 per 100.
- Gandy.** One of the best late berries. Plant a good strong, healthy grower; berry large, firm, bright in color, quality good.
- Joe (Joe Johnson; Big Joe).** A midseason to late variety, fully up to Chesapeake in size, firmness, and yield, and superior to it in flavor and color. It also succeeds in a great variety of soils. This is a berry that will not disappoint.
- Marshall.** One of the richest flavored Strawberries. Is dark crimson when fully ripe and of good size. Requires good soil and high cultivation. Early.
- Nick Ohmer.** A giant among Strawberries; it is never misshaped; dark, glossy, red, firm and of excellent flavor. Midseason.
- Senator Dunlap.** Fruit is of good size, regular and attractive in form, deep red in color without and within, firm in substance and excellent in quality. Early.
- Sharpless.** One of the most popular; exceedingly vigorous, productive; fruit large, crimson, firm and of good quality. Midseason.
- Success.** One of the very best early varieties. Large, firm, bright crimson, fine-flavored berries.
- William Belt.** Berries are of large size and good quality; deep crimson in color. One of the very best varieties. Midseason to late.
- Layer plants,** ready in October, of any of the above varieties, \$2 per 100, \$17.50 per 1,000.



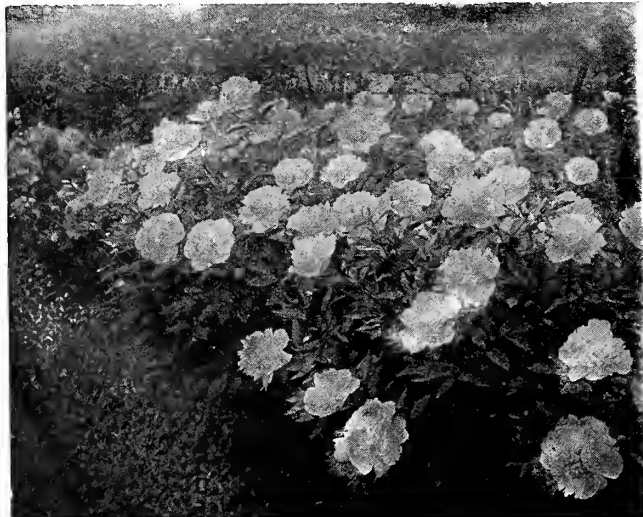
Chesapeake Strawberries

Autumn-fruiting Strawberries

The varieties here offered are of American origin, and have been tried with most gratifying results.

- Champion.** A fine very dark red; free and of excellent quality. \$1.50 per doz., \$10 per 100.
- Progressive.** Berries good size, luscious, and prolific. \$1.35 per doz., \$8 per 100.

Peonies and Irises for Every Garden



PEONIES

Peonies are delightful companions for irises; their dense foliage alone makes a charming background and their wonderful abundance of gorgeous and gay-colored flowers blend so beautifully with the colors in the irises that each enhances the beauty of the other.

Both are so hardy, so easy to grow, so sure to bloom, so ready to respond eagerly to any little care and attention, that a lover of one must necessarily have or develop a fondness for the other.

- Albert Crousse.** (Crousse, 1893.) Bomb type. Large well-formed flowers of soft shell-pink with faint salmon tints. Vigorous grower with tall, erect stems. Very fine as a cut-flower. Late. 75 cts. each.
- Couronne d'Or.** (Calot, 1873.) Semi-rose type. Immense, full flowers, pure white with a ring of yellow stamens around a tuft of center petals tipped carmine, gaining the title of "Crown of Gold." 75 cts. each.
- Edulis Superba.** (Lemon, 1824.) Crown type. Beautiful, bright clear mauve-pink with silvery reflex. Decoration Day Peony. Very early. 75 cts. each.
- Felix Crousse.** (Crousse, 1881.) Rose type. Rich, dazzling ruby-red without a tinge of purple. None better. Late midseason. 75 cts. each.
- Festiva Maxima.** (Mieliez, 1851.) Rose type. The finest white in existence. Pure white with clear carmine spot on edge of center petal. Early. 50 cts. each.
- Germaine Bigot.** (Dessert, 1902.) Crown type. Very large, compact flower, composed of broad petals. Color lilac-rose, center prominently flecked crimson. Strong, erect grower with medium tall stems. Very free blooming. Midseason. \$1.25 each.
- Lady Alexandra Duff.** (Kelway, 1902.) An immense, cup-shaped flower of rose type, with wide imbricated petals. The color of the outer petals is delicate blush-pink rapidly fading to lovely French white. Central flower of rather flattened circular form and the central petals have a touch of carmine. Lateral buds come in semi-double, water-lily-like flowers, exposing the anthers. Showy, fragrant, and very prolific. Robust, strong grower, thriving in all sections. \$6 each.
- La Tendresse.** (Crousse, 1896.) Rose type. Very full large flowers borne in elusters. Color milk-white, sometimes splashed with carmine. Tall, strong grower; free bloomer; fragrant. Midseason. 75 cts. each.
- Louis Van Houtte.** (Calot, 1867.) Medium size, semi-rose type. Deep carmine-rose, tipped silver, with fiery reflex—very brilliant coloring. Fragrant. Medium height and habit. Late. 50 cts. each.
- Mme. Emile Lemoine.** (Lemoine, 1899.) Semi-rose type. Large, globular, compact flower. Glossy white, overlaid with a sheen of tender satiny pink covered with minute lilac dots. Very beautiful. \$1 each.
- Mme. Jules Dessert.** (Dessert, 1909.) Rose type. Creamy white overlaid with a pronounced pink, center intermixed with golden stamens. Very large, with broad, delicate petals of translucent texture. A charming variety and should be in every collection. \$5 each.
- Marquis C. Lagergren.** (Dessert, 1911.) Semi-rose type. Large; bright velvety crimson. One of the finest reds ever produced. \$2 each.
- Pierre Reignoux.** (Dessert, 1908.) Semi-rose type. An even shade of Tyrian rose, center flecked crimson, with imbricated petals. Dwarf, erect habit. Early midseason. \$1 each.

Pomponette. (Dessert, 1909.) Anemone type. Velvety pink, shaded purple, with brilliant reflex and silver-tipped border. Dwarf, erect growth. Very full flowers of good form. Midseason. \$1 each.

Rachel. (Lemoine, 1904.) Rose type. Lively soft pink, darker when just opening. Rather dwarf with strong stems. Very attractive and scarce. \$5 each.

Reine Hortense (President Taft). (Calot, 1857.) Rose type. Enormous, compact flat flower of soft flesh color, deepening to shell-pink; center showing crimson splashes, sometimes faint stripes on the face of the petals. Well formed and very striking. Deliciously fragrant. A vigorous grower and profuse bloomer. Fine for cut-flowers and usually in bloom just about Decoration Day. Midseason. \$2 each.

Sarah Bernhardt. (Lemoine, 1906.) Semi-rose type. Very large flower of perfect form, full and double, with twisted imbricated petals. Color apple-blossom-pink with each petal silver-tipped. Strong grower, free bloomer, and very fragrant. One of the finest and most dependable Peonies ever produced, attracting attention in every garden. Late midseason. \$2 each.

Solange. (Lemoine, 1907.) Rose type. A very large, full, compact flower of indescribable beauty. Color rare, deep orange-salmon at the heart, overlaid with delicate tender reddish brown—a most unique color combination. The plant is a strong, robust grower and very abundant bloomer. Considered as one of the most unusual and charming Peonies ever produced. Midseason. \$6 each.

Suzette. (Dessert, 1911.) Semi-rose type. Bengal-rose, lightly shaded carmine-purple, with silvery reflex. Strong stems. Rare. Midseason. \$1 each.

Single Peony

Mistral. (Dessert, 1902.) Carmine, yellow center. 75 cts. each.

Japanese Variety

Ruigegno. Dark velvety maroon, with brilliant yellow petaloids. Very striking and unusually large. \$5 each.

FINE IRISES

Their beauty outrivals that of the orchids in their delicacy of structure and wide range of colors. No garden is complete without them, and a very delightful garden can be made with nothing but them, as they are especially adapted for flower borders, shrubberies, woodland walks, and for surrounding lakes and ponds, if planted well above the water-level.

S means standards or upper petals; **F** means falls or lower petals

Afterglow. (Sturtevant, 1917.) Misty lavender, lit with yellow at the center. 3 to 4 ft. 50 cts. each, \$5 per doz.

Ambassadeur. (Vilmorin, 1920.) S. dull purplish bronze; F. deep velvety maroon; beards and styles yellow. 4 ft. \$1.50 each.

Azure. (Bliss, 1918.) S. lavender-blue; F. rich violet-blue. A pure deep, and intense color. \$1 each, \$10 per doz.

Celeste. (Lemon, 1855-58.) S. and F. pale azure-blue. 2½ ft. 25 cts. each, \$2.25 per doz.

Dorothea K. Williamson. Large flowers of velvety dark madder-violet—wonderful color. 2½ ft. \$1 each, \$10 per doz.

Her Majesty. (Perry, 1903.) S. rose-pink; F. bright crimson, shaded darker. 25 cts. each, \$2.25 per doz.

Juniata. (Farr, 1909.) S. and F. beautiful clear deep blue. One of the tallest Bearded Irises known. Large, fragrant flowers. 35 cts. each, \$3.50 per doz.

Kharput. S. violet; F. deep purple-violet, very long; beard white. Very large flower. 2½ ft. 25 cts. each, \$2.25 per doz.

Lord of June. (Yeld, 1911.) S. lavender-blue; F. rich violet-blue; fine fragrance. 40 in. \$1 each, \$10 per doz.

Monsignor. (Vilmorin, 1907.) S. pale violet; F. heavily overlaid with dusky violet. 2 ft. 25 cts. each, \$2.25 per doz.

Mrs. Horace Darwin. (Foster, 1893.) S. white, F. slightly reticulated violet. 2 ft. 25 cts. each, \$2.25 per doz.

Pallida Dalmatica. Clear deep lavender. Very large and most prolific; unequalled for massing or cut-flowers. 3½ ft. 35 cts. each, \$3.25 per doz.

Pallida Speciosa. S. dark lavender with lighter shadings; F. lavender, shaded light purple. 25 cts. each, \$2.25 per doz.

Queen of May. Soft rose-lilac—a decided pink effect. Very popular. 25 cts. each, \$2.25 per doz.

Rhein Nixe. (Goos & Koenemann, 1910.) S. white; F. violet-blue with white edge. Tall and large. Robust grower. 3 ft. 35 cts. each, \$3.25 per doz.

Souv. de Mme. Gaudichau. (Millet, 1914.) A brilliant velvety black-purple. Very beautiful and outstanding. Strong grower. 40 in. \$2 each.

Fertilizers for the Lawn, Garden, and Greenhouse

(Prices of Fertilizers subject to change without notice)

- Bone Flour.** Ground perfectly fine. An excellent fertilizer for pot plants or beds where an immediate effect is wanted. 100 lbs. \$5, 200 lbs. \$8.50, 1,000 lbs. \$37.50.
- Raw Bone-Meal.** (Warranted Pure.) 3 lbs. 25 cts., 5 lbs. 35 cts., 10 lbs. 60 cts., 25 lbs. \$1.40, 50 lbs. \$2.50, 100 lbs. \$4, sack of 200 lbs. \$7.50, ½ ton \$32.50, ton \$60.
- Canada Hardwood Ashes.** Excellent as a lawn dressing; 1,000 to 1,500 lbs. per acre. \$4.25 per bbl., 1,000 lbs. \$18, ton \$35.
- Cattle or Cow Manure, Shredded.** For garden, lawn, and greenhouse, and especially good to mix with compost. 100 lbs. \$3.50, 500 lbs. \$16.25, 1,000 lbs. \$30, per ton \$55.
- Chrysanthemum Manure (Thomson's SPECIAL).** Entirely soluble and very powerful. Especially suitable for top-dressing chrysanthemums and similar plants. It is meant to be used as an additional stimulant during the growing season. 28-lb. bag \$4, 56-lb. bag \$7.
- Clay's Fertilizer.** An English chemical fertilizer, for forcing greenhouse plants and vegetables. It can be used in either dry or liquid form. 28-lb. bag \$3.75, 56-lb. bag \$6.25, 112-lb. bag \$12.
- Plant Food.** For house, garden or conservatory. 1-lb. can 25 cts., 5-lb. can 75 cts.

- Sheep Manure, Pulverized.** We recommend this for all purposes where a high-class fertilizer is required. It is gathered from sheep corrals where they have been under cover, hence retaining its fertilizing requisites. For flower- or vegetable-gardens and as a top dressing for lawns it is unequalled. Also excellent for pot plants. 5 lbs. 40 cts., 10 lbs. 65 cts., 25 lbs. \$1.25, 50 lbs. \$2, 100 lbs. \$3.50, 500 lbs. \$16.50, 1,000 lbs. \$30, ton \$55.
- Soot, Scotch.** Genuine imported. An excellent fertilizer for stimulating growth, and giving a rich dark foliage; also an excellent remedy against slugs, grubs and cut-worms when mixed in the surface of the soil. Sack (112 lbs.) \$7.
- Stim-U-plant.** A fertilizer in tablet form. The tablets contain the essential plant foods in highly concentrated form and are therefore, very convenient for house use. Package of 30 tablets 25 cts., 100 tablets 75 cts., 1,000 tablets \$3.50.
- Tobacco Stems.** For fumigating, mulching and fertilizing; an excellent top dressing for lawns in winter. In bales at 2½ cts. per lb., ½ ton \$17, ton \$32.
- Vine, Plant, and Vegetable Manure (THOMSON'S).** A safe and reliable food and stimulant for grape-vines and every fruit-bearing plant; also for foliage, flowering plants and vegetables. 28-lb. bag \$3.75, 56-lb. bag \$6.25, 112-lb. bag \$12.

Insecticides, Etc.

(Prices subject to change without notice)

(Directions for using any of the following will be found on each package)

- Ant Destroyer.** A powder for destroying ants in lawn, garden or house. ¼ lb. 30 cts., lb. \$1.
- Aphine.** The recognized standard insecticide. Not a cure-all, but a specific remedy for all sap-sucking insects infesting plant life, such as green, black, white fly, thrips, red spider, mealy bug and soft scales. Pt. 70 cts., qt. \$1.15, gal. \$3.25.
- Aphis Punk.** A nicotine paper for fumigating. Box \$1, case (12 boxes) \$9.50.
- Arsenate of Lead.** (Powdered.) One to 1½ lbs. dilutes to 50 gals. of water, or may be used dry, like paris green. Lb. 50 cts., 5 lbs. \$2.25, 10 lbs. \$4, 25 lbs. \$9, 50 lbs. \$15, 100 lbs. \$27.50.
- Arsenate of Lead.** (Paste.) Unexcelled as a general spray for all leaf-eating pests. Lb. 40 cts., 5 lbs. \$1.75, 10 lbs. \$2.75.
- Black-Leaf 40.** A concentrated solution of nicotine for spraying. 1-oz. bottle 35 cts., ½ lb. \$1.25, 2 lbs. \$3.50, 10 lbs. \$13.50.
- Bordeaux Mixture.** (Liquid.) For all fungous diseases, such as mildew and the various rots of the grape. One gallon will make one barrel of liquid. Gal. \$1.50.
- Bordeaux Mixture.** (Dry.) For dusting plants affected with mildew and all fungous diseases. Can be used as a spray. 1-lb. box 35 cts. (makes 5 gallons spray), 5 lbs. \$1.25.
- Copper Solution.** (Liquid.) For fungus, mildew, leaf blight, rust, and black rot. Qt. \$1.50, gal. \$4.
- Fish-Oil Soap.** (Good's Caustic Soft Soap.) 2 lbs. 50 cts., 5 lbs. \$1.10, 25 lbs. \$3.75.
- Fungine.** An infallible remedy for mildew, rust, and bench fungi. Does not stain the foliage. Qt. \$1.15, gal. \$3.25.
- Grape Dust.** For the prevention of mildew on roses, grapes, gooseberries, etc. 5-lb. pkg. \$1, 10 lbs. \$1.85.
- Hellebore.** For destroying slugs, worms, caterpillars, etc. ½ lb. 35 cts., lb. 60 cts., 5 lbs. \$2.75.

- Kerosene Emulsion.** (Liquid.) For cabbage worm, scale on trees, caterpillar, melon louse, rose bugs, green fly, and lice of all kinds, all sucking insects, either on plants or animals. Gal. \$2.25.
- Lemon Oil Co.'s Standard Insecticide.** Destroys mealy bugs, scale, thrips, red spider, black and green fly, etc. ½ pt. 35 cts., pt. 60 cts., qt. \$1, ½ gal. \$1.75, gal. \$3, 5 gals. \$12.
- Nico-Fume.** (Liquid.) For use as a spray or vapor, for controlling green fly, aphids, etc., in greenhouses and outdoors. ¼ lb. 85 cts., lb. \$2.50, 4 lbs. \$8.50, 8 lbs. \$16.
- Nico-Fume Paper.** For fumigating greenhouses; gives off dense fumes charged with nicotine. Per box of 24 sheets \$1.50, 144 sheets \$5.75, 288 sheets \$10.50.
- Nico-Fume Tobacco Powder.** A tobacco powder highly charged with nicotine; splendid for fumigating greenhouses. Lb. can \$1.35, 5 lbs. \$5, 10 lbs. \$9.
- Nikoteen.** (30 per cent.) One of the very best forms of tobacco or nicotine preparations; usually diluted in water; makes a most satisfactory spray as well as vapor. 1-oz. bottle 25 cts., 1¼-oz. bottle 45 cts., ½-lb. bottle \$1.35, lb. \$2.25, 4 lbs. \$7.50.
- Pyrox.** A combined insecticide and fungicide for all leaf-eating insects. Used largely by potato-growers. Lb. 50 cts., 5 lbs. \$2, 10 lbs. \$3.50, 25 lbs. \$7, 50 lbs. \$12.50, 100 lbs. \$21, 300 lbs. \$58.50.
- Slug Shot (Hammond's).** One of the cheapest and best powders for destroying insects. 5 lbs. 60 cts., 10 lbs. \$1.20, 25 lbs. \$2.75.
- Sulphur, Powdered.** For mildew. Lb. 10 cts., 5 lbs. 45 cts., 10 lbs. 85 cts., 25 lbs. \$2, 100 lbs. \$7.50.
- Tobacco Dust (Stoothoff's).** For burning or dusting; state which is wanted. 5 lbs. 45 cts., 10 lbs. 85 cts., 25 lbs. \$1.75, 50 lbs. \$3.25, 100 lbs. \$6.
- Wilson's O. K. Plant Spray.** A powerful yet harmless and efficient insecticide for aphids, red spider, mildew, scale, etc., for inside and outside spraying. Gal. \$3.25.

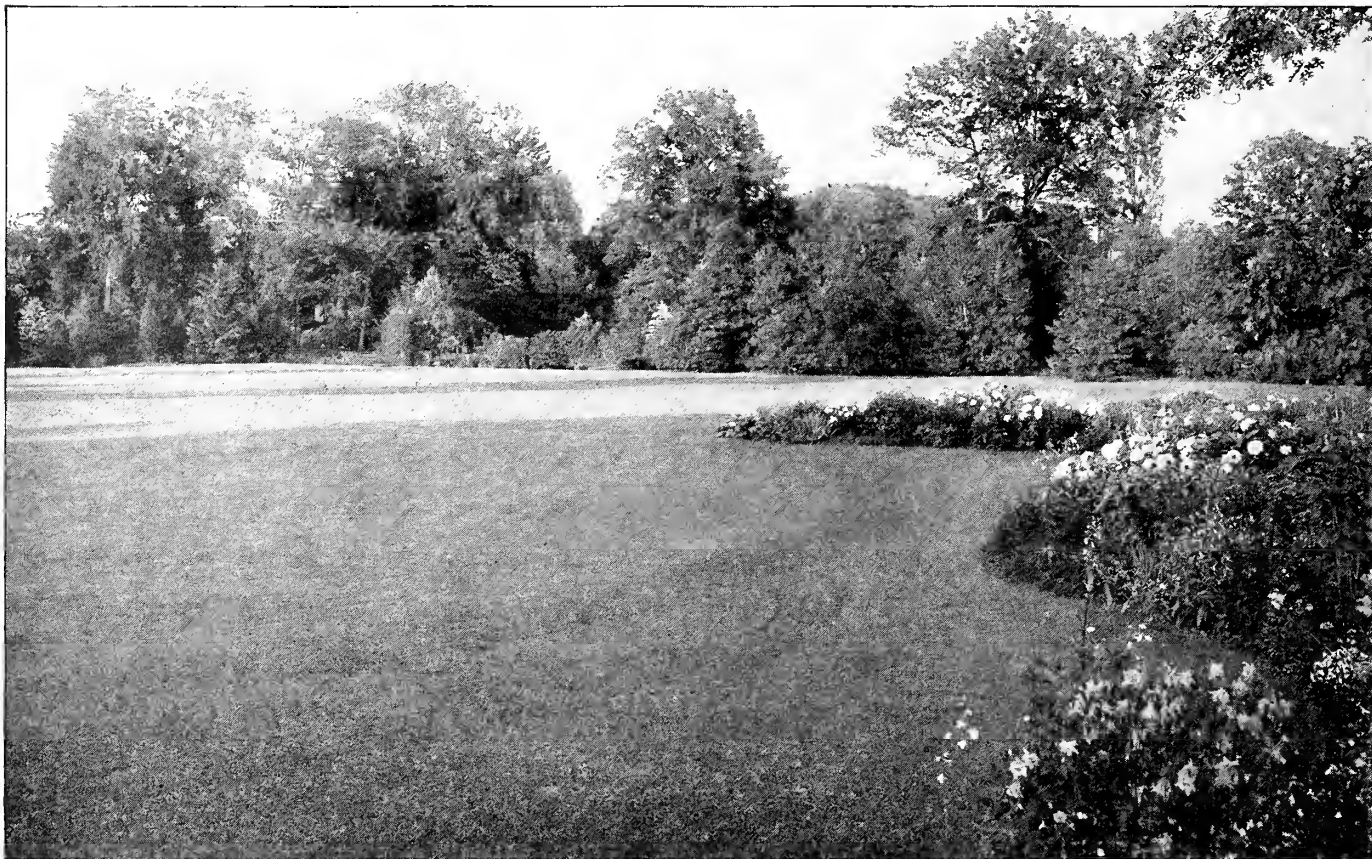
Earthen Bulb Pans

	Each	Doz.	100	1,000
6 inches diam.	\$0 09	\$0 98	\$7 29	
7 " "	15	1 62	12 15	
8 " "	22	2 34	17 55	
9 " "	33	3 60	27 00	
10 " "	45	4 86	36 45	
12 " "	91	9 90	74 25	
14 " "	1 48	16 20	121 50	

	Qt.	4 qts.	Pk.	Bus.
Charcoal (Lump)	\$0 10	\$0 35	\$0 65	\$2 25
Leaf Mold	10	30	50	1 50
Pebbles	10	40	75	2 00
Potting Sand	10	25	40	1 40
Prepared Potting Soil	10	25	40	1 50

Earthen Flower Pots

Height and Width inside	Each	Doz.	100	1,000
2¼ inch	\$0 02	\$0 18	\$1 16	\$10 84
2½ " "	02	18	1 35	12 75
3 " "	03	24	1 76	16 58
3½ " "	03	29	2 16	20 40
4 " "	04	36	2 70	25 50
4½ " "	06	49	3 65	34 43
5 " "	07	65	4 86	45 90
5½ " "	08	81	6 08	57 38
6 " "	09	98	7 29	68 85
6½ " "	13	1 30	9 72	91 80
7 " "	15	1 62	12 15	
8 " "	22	2 34	17 55	
9 " "	33	3 60	27 00	
10 " "	45	4 86	36 45	



Waterer's Grass Seed Mixtures for Lawns and Pleasure Grounds

The fall season, from August 15 to October 15, is the best time to sow Lawn Grass Seed. The fall rains hasten germination and enable the roots to become well established before freezing weather sets in. Growth is resumed with the first thaws of early spring and the roots are strengthened, while seed sown in the spring is just undergoing germination. A lawn grown in this way will endure summer droughts better than a spring-sown lawn. One quart is sufficient for 100 square feet, 4 to 5 bushels for an acre; or for renovating old lawns, about half that quantity.

HOW TO MAKE A LAWN

To produce a good lawn requires considerable work; do not make the mistake of trying to cheapen the preparation, for nowhere in the garden is the old axiom of "what is worth doing, is worth doing well," better illustrated.

The soil must be deep; a good lawn cannot exist on thin soil. Plow the ground deep—a foot is none too much. Apply to the soil before plowing, a heavy coating of well-rotted stable manure. Fresh manure carries too many weed-seeds; its use should be avoided. A lawn will not thrive on sour soil; lime the ground after plowing, using 2 tons of ground limestone to the acre. If manure is not available, sheep manure or chemical manures may be substituted.

Ground bonemeal, $1\frac{1}{2}$ tons to the acre, is a good lawn fertilizer, furnishing plant-food over a long period; 100 pounds of nitrate of soda and 100 pounds of dried blood to the acre should be applied at the same time; these furnish nitrogen for immediate use. Sheep manure at the rate of 1,000 pounds to the acre may be used instead of nitrate of soda and dried blood. When only a small lawn is being made, use 20 pounds of bonemeal to 250 square feet, $\frac{1}{2}$ pound each of nitrate of soda and dried blood, or 6 pounds of sheep manure. Harrow and cross-harrow until the ground is thoroughly pulverized; the better harrowed the ground is, the better the grass will grow and the more permanent the lawn.

If Grass Seed is wanted by parcel post, please add for postage at your zone rate. See second cover page



WATERER'S LAWN SEED MIXTURES

WATERER'S CITY AND SUBURBAN MIXTURE. (With White Clover.) This splendid grass and clover mixture is specially prepared for city and suburban grass plots, and for sowing around bungalows, where fast results and a beautiful green turf are required. Lb. 60 cts.; 5 lbs. \$2.50; 10 lbs. \$4.50; 25 lbs. or more, 40 cts. per lb.

WATERER'S SPECIAL EVERGREEN LAWN MIXTURE. This mixture is composed of a combination, in proper proportions, of the best natural lawn grasses, so as to produce a continuous good lawn from early spring until late in the fall, and the ingredients are the highest grade of re-cleaned seeds only. Lb. 50 cts.; 5 lbs. \$2.25; 10 lbs. or more, 40 cts. per lb.

WATERER'S POPULAR EVERGREEN LAWN MIXTURE. In this mixture the quantities of some of the more expensive grasses are reduced or left out. Produces a thick turf, well adapted to hard usage. Lb. 40 cts.; 5 lbs. \$1.75; 10 lbs. or more, 32½ cts. per lb.

WATERER'S MIXTURE FOR SHADY PLACES. A mixture of grasses best adapted for sowing in shady places, where other grasses will not thrive. Lb. 50 cts.; 5 lbs. \$2.25; 10 lbs. or more, 40 cts. per lb.

Waterer's Permanent Pasture and Hay Mixture. Far superior to any other mixture for producing permanent hay and pasture. A mixture of varieties which will form a permanent pasture that lasts for years. Composed chiefly of native and acclimated grasses, which have been found to be best. These are blended in their proper proportions to give the desired results. Sow on new land which has been plowed and harrowed, at the rate of 60 pounds per acre; on ground partly covered, about 30 pounds per acre. 5 lbs. \$1.50; 10 lbs. or more, 27½ cts. per lb.

WATERER'S SEASHORE LAWN GRASS SEED. A special mixture of grasses peculiarly suited for seaside lawns, composed of strong-rooted varieties which will quickly produce a good turf. Lb. 50 cts.; 5 lbs. \$2.25; 10 lbs. or more, 40 cts. per lb.

WATERER'S PUTTING-GREEN MIXTURE. A mixture of very fine-bladed varieties of grasses suitable for the production of a close, thick, fine turf. Lb. 80 cts.; 5 lbs. \$3.50; 10 lbs. \$6.50; 25 lbs. or more, 60 cts. per lb.

WATERER'S TENNIS COURT MIXTURE. A mixture of fine grasses for tennis courts, and which will make a firm, green and lasting turf. Lb. 50 cts.; 5 lbs. \$2.25; 10 lbs. or more, 40c. per lb.

WATERER'S GOLF LINKS MIXTURE. The grasses in this mixture will produce a rich green turf that will resist tramping and hard wear and will retain its color during the severest drought. Sow 100 pounds to the acre. Lb. 40 cts.; 5 lbs. \$1.75; 10 lbs. or more, 32½ cts. per lb.

White Dutch Clover Seed

Excellent for use on lawns; forms a close herbage and remains green throughout the season. We furnish the choicest grade of seed. Lb. 85 cts.; 5 lbs. \$4; 10 lbs. \$7.75; bus. (60 lbs.) \$45.

INDEX

BULBS	Page	BULBS, continued	Page	ROOTS and PLANTS	Page
Amaryllis	12	Hyacinths	2-4	Iris	22
Begonia	13	Iris, Spanish	15	Peonies	22
Calla Lilies	13	Ixias	15	Strawberry	21
Caladium, Fancy-Leaved	13	Jonquils	11		
Chionodoxa	13	Liliums	12	SEEDS	
Crocus	13	Lily-of-the-Valley	15	Flower Seeds	16-21
Eranthis Hyemalis	14	Narcissi	9-11	Lawn Grass Mixtures	25
Freerias	14	Oxalis	15		
Fritillaria	14	Scillas	15	Fertilizers and Insecticides	23
Gloxinia	14	Snowdrops	15		
Gladioli, Early-Flowering	14	Spiræa	15	Sundries	23



HOSEA WATERER'S BULBS



HOSEA WATERER

Seedsman and Bulb Importer

714 Chestnut St., Philadelphia

